

RPJ067Ra01 100µg

Recombinant Galactose-1-Phosphate Uridyltransferase (GALT)

Organism Species: *Rattus norvegicus* (Rat)

Instruction manual

FOR RESEARCH USE ONLY

NOT FOR USE IN CLINICAL DIAGNOSTIC PROCEDURES

12th Edition (Revised in Aug, 2016)

[PROPERTIES]

Source: Prokaryotic expression

Host: *E.coli*

Residues: Met1~Ala379

Tags: N-terminal His Tag

Subcellular Location: Golgi apparatus

Purity: > 80%

Traits: Freeze-dried powder

Buffer formulation: PBS, pH7.4, containing 0.01% SKL, 5% Trehalose .

Original Concentration: 50µg/mL

Applications: Positive Control; Immunogen; SDS-PAGE; WB.

(May be suitable for use in other assays to be determined by the end user.)

Predicted isoelectric point: 6.1

Predicted Molecular Mass: 47.0kDa

Accurate Molecular Mass: 47kDa as determined by SDS-PAGE reducing conditions.

[USAGE]

Reconstitute in ddH₂O to a concentration of 0.1-0.2 mg/mL. Do not vortex.

[STORAGE AND STABILITY]

Storage: Avoid repeated freeze/thaw cycles.

Store at 2-8°C for one month.

Aliquot and store at -80°C for 12 months.

Stability Test: The thermal stability is described by the loss rate. The loss rate was determined by accelerated thermal degradation test, that is, incubate the protein at 37°C for 48h, and no obvious degradation and precipitation were observed. The loss rate is less than 5% within the expiration date under appropriate storage condition.

[SEQUENCE]

MSQSGADPEQ RQQASEADAM AATFRASEHQ HIRYNPLQDE WVLVSAHRMK
RPWQGQVEPQ LLKTVPRHDP LNPLCPGATR ANGEVNPPYD GTFLFDNDFP
ALQPDAPDPG PSDHPLFRVE AARGVCKVMC FHPWSDVTLP LMSVPEIRAV
IDAWASVTEE LGAQYPWVQI FENKGAMMGC SNPHPHCQVW ASNFLPDIAQ
REERSQQTYH NQHKGKPLLE YGHQELLRKE RLVLTSEYWI VLVPFWAVWP
FQTLLEPRRH VQRLPELTPA ERDDLASTMK KLLTKYDNLF ETSFPYSMGW
HGAPMGLKTG ATCDHWQLHA HYYPLLRSR TVRKFMVGYE MLAQAQRDLT
PEQAAERLRV LPEVHYCLTQ KDKETAATA

[IDENTIFICATION]

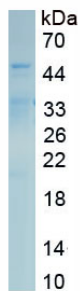


Figure. SDS-PAGE

[IMPORTANT NOTE]

The kit is designed for research use only, we will not be responsible for any issue if the kit was used in clinical diagnostic or any other procedures.