

**RPA372Hu05 100µg**

**Recombinant Gelsolin (GS)**

**Organism Species: *Homo sapiens (Human)***

***Instruction manual***

FOR RESEARCH USE ONLY

NOT FOR USE IN CLINICAL DIAGNOSTIC PROCEDURES

---

12th Edition (Revised in Aug, 2016)

## [ **PROPERTIES** ]

**Source:** Prokaryotic expression

**Host:** *E.coli*

**Residues:** Gly170~Arg419

**Tags:** N-terminal His Tag

**Subcellular Location:** Secreted

**Purity:** > 97%

**Traits:** Freeze-dried powder

**Buffer formulation:** 20mM Tris, 150mM NaCl, pH8.0, containing 1mM EDTA, 1mM DTT, 0.01% SKL, 5% Trehalose and Proclin300.

**Original Concentration:** 200µg/mL

**Applications:** Positive Control; Immunogen; SDS-PAGE; WB.

(May be suitable for use in other assays to be determined by the end user.)

**Predicted isoelectric point:** 8.5

**Predicted Molecular Mass:** 31.3kDa

**Accurate Molecular Mass:** 31kDa as determined by SDS-PAGE reducing conditions.

## [ **USAGE** ]

Reconstitute in 20mM Tris, 150mM NaCl (pH8.0) to a concentration of 0.1-1.0 mg/mL. Do not vortex.

## [ **STORAGE AND STABILITY** ]

**Storage:** Avoid repeated freeze/thaw cycles.

Store at 2-8°C for one month.

Aliquot and store at -80°C for 12 months.

**Stability Test:** The thermal stability is described by the loss rate. The loss rate was determined by accelerated thermal degradation test, that is, incubate the protein at 37°C for 48h, and no obvious degradation and precipitation were observed. The loss rate is less than 5% within the expiration date under appropriate storage condition.

**[ SEQUENCE ]**

```
G  GVASGFKHVV  PNEVVVQRLF  QVKGRRVVRA
TEVPVSWESF  NNGDCFILD  L  GNNIHQWCGS  NSNRYERLKA  TQVSKGIRDN
ERSGRARVHV  SEEGTEPEAM  LQVLGPKPAL  PAGTEDTAKE  DAANRKLAKL
YKVSNGAGTM  SVSLVADENP  FAQGALKSED  CFILDHGKDG  KIFVWKGKQA
NTEERKAALK  TASDFITKMD  YPKQTQVSVL  PEGGETPLFK  QFFKNWRDPD
QTDGLGLSYL  SSHIANVER
```

**[ IDENTIFICATION ]**

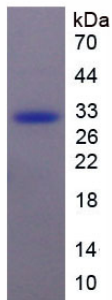


Figure. SDS-PAGE

**[ IMPORTANT NOTE ]**

The kit is designed for research use only, we will not be responsible for any issue if the kit was used in clinical diagnostic or any other procedures.