

RPA068Ra02 200µg

Recombinant Glial Fibrillary Acidic Protein (GFAP)

Organism Species: *Rattus norvegicus* (Rat)

Instruction manual

FOR RESEARCH USE ONLY

NOT FOR USE IN CLINICAL DIAGNOSTIC PROCEDURES

13th Edition (Revised in Aug, 2023)

[PROPERTIES]

Source: Prokaryotic expression

Host: *E.coli*

Residues: Met1~Met430

Tags: N-terminal His Tag

Subcellular Location: Cytoplasm

Purity: > 90%

Traits: Freeze-dried powder

Buffer formulation: 20mM Tris, 150mM NaCl, pH8.0, containing 0.01% skl, 5%Trehalose.

Original Concentration: 100µg/mL

Applications: Positive Control; Immunogen; SDS-PAGE; WB.

(May be suitable for use in other assays to be determined by the end user.)

Predicted isoelectric point: 5.4

Predicted Molecular Mass: 53.6kDa

Accurate Molecular Mass: 54kDa as determined by SDS-PAGE reducing conditions.

[USAGE]

Reconstitute in ddH₂O to a concentration of 0.1-1.0 mg/mL. Do not vortex.

[STORAGE AND STABILITY]

Storage: Avoid repeated freeze/thaw cycles.

Store at 2-8°C for one month.

Aliquot and store at -80°C for 12 months.

Stability Test: The thermal stability is described by the loss rate. The loss rate was determined by accelerated thermal degradation test, that is, incubate the protein at 37°C for 48h, and no obvious degradation and precipitation were observed. The loss rate is less than 5% within the expiration date under appropriate storage condition.

[SEQUENCE]

```

MERRRITSAR RSYASSETMV RGHGPTRH LG TIPRLSLSRM TPPLPARVDF
SLAGALNAGF KETRASERA E MMELNDRFAS YIEKVFLEQ QNKALAAELN
QLRAKEPTKL ADVYQAE LRE LRLRLDQLTT NSARLEVERD NLTQDLGTLR
QKLQDET NLR LEAENNLAVY RQEAD EATLA RVDLERKVES LEEEI QFLRK
IHEEEVRELQ EQLAQQQVHV EMDVAKPDLT AALREIRTQY EAVATSNMQE
TEEWYRSKFA DLTDVASRNA ELLRQAKHEA NDYRRQLQAL TCDLESLRGT
NESLERQMRE QEERHARES A SYQEALARLE EEGQSLKEEM ARHLQEYQDL
LNVKLALDIE IATYRKLL EG EENRITIPVQ TFSNLQIRET SLDTKSVSEG
HLKRNIVVKT VEMRDGEVIK ESKQE HKDVM
    
```

[IDENTIFICATION]

CATGGAGCGAGAGATCACTCTGCACGCGCGCTCCTATGCGCTCTCCGAGAGATGGTCAGGGGCGATGGTCTACCGAGACCTGGGTACCATTCGCGGCTCTCCCTGTCTCGAATGACGCTCCACTCCCTGCGAGGTAGACTTCTCCCTGGCGGGGCGCTCAATGCCGCTCGAAGAGACTCGGGCCGAGCGCGGGAGATGATGGAGCT
M E R R R I T S A R R S Y A S S E T M V R G H G P T R H L G T I P R L S L S R M T P P L P A R V D F S L A G A L N A G F K E T R A S E R A E N H E L

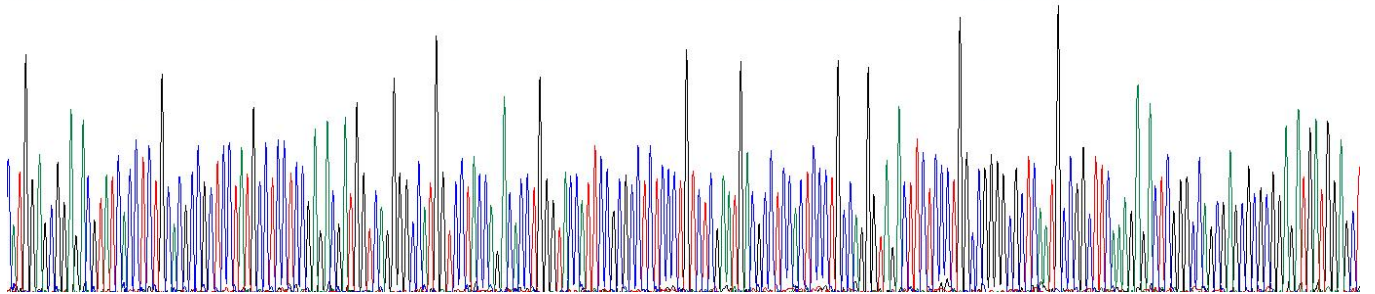
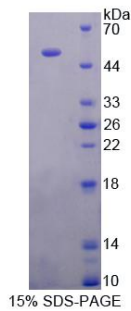


Figure. Gene Sequencing (Extract)



[IMPORTANT NOTE]

The kit is designed for research use only, we will not be responsible for any issue if the kit was used in clinical diagnostic or any other procedures.