

**RPE805Ra01 200µg**

**Recombinant Glutamate Receptor, Ionotropic, N-Methyl-D-Aspartate 1 (GRIN1)**

**Organism Species: *Rattus norvegicus* (Rat)**

***Instruction manual***

FOR RESEARCH USE ONLY

NOT FOR USE IN CLINICAL DIAGNOSTIC PROCEDURES

---

13th Edition (Revised in Aug, 2023)

**[ PROPERTIES ]**

**Source:** Prokaryotic expression

**Host:** *E.coli*

**Residues:** Arg19~Gln559

**Tags:** N-terminal His Tag

**Subcellular Location:** Membrane

**Purity:** > 80%

**Traits:** Freeze-dried powder

**Buffer formulation:** PBS, pH7.4, containing 0.01% SKL, 5% Trehalose .

**Original Concentration:** 50µg/mL

**Applications:** Positive Control; Immunogen; SDS-PAGE; WB.

(May be suitable for use in other assays to be determined by the end user.)

**Predicted isoelectric point:** 8.0

**Predicted Molecular Mass:** 64.3kDa

**Accurate Molecular Mass:** 64kDa as determined by SDS-PAGE reducing conditions.

**[ USAGE ]**

Reconstitute in ddH<sub>2</sub>O to a concentration of 0.1-0.2 mg/mL. Do not vortex.

**[ STORAGE AND STABILITY ]**

**Storage:** Avoid repeated freeze/thaw cycles.

Store at 2-8°C for one month.

Aliquot and store at -80°C for 12 months.

**Stability Test:** The thermal stability is described by the loss rate. The loss rate was determined by accelerated thermal degradation test, that is, incubate the protein at 37°C for 48h, and no obvious degradation and precipitation were observed. The loss rate is less than 5% within the expiration date under appropriate storage condition.

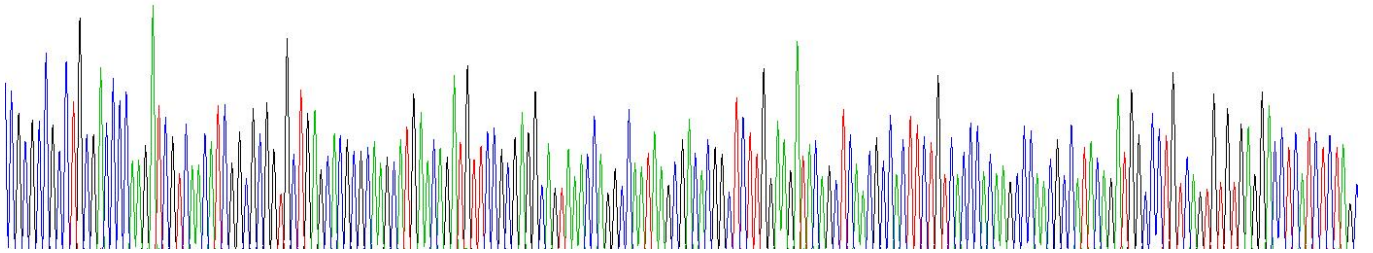
**[ SEQUENCE ]**

```

RA ACDPKIVNIG AVLSTRKHEQ MFREAVNQAN
KRHGSWKIQL NATSVTHKPN AIQMALSVC E DLISSQVYAI LVSHPTPND
HFTPTVSYT AGFYRIPVLG LTRMSIYSD KSIHLSFLRT VPPYSHQSSV
WFEMMRVYNW NHIILLVSDD HEGRAAQKRL ETLLEERESK AEKVLQFDPG
TKNVTALLME ARELEARVII LSASEDDAAT VYRAAAMLNM TGSGYVWLVG
EREISGNALR YAPDGIIGLQ LINGKNESAH ISDAVGVAQ AVHELLEKEN
ITDPPRGCVG NTNIWKTGPL FKRVLMSKY ADGVTGRVEF NEDGDRKFAN
YSIMNLQNRK LVQVGIYNGT HVIPNDRKII WPGGETEKPR GYQMSTRLKI
VTIHQEPFVY VKPTMSDGC KEEFTVNGDP VKKVICTGPN DTSPGSPRHT
VPQCCYGF CI DLLIKLARTM NFTYEVHLVA DGKFGTQERV NNSNKKEWNG
MMGELLSGQA DMIVAPLTIN NERAQYIEFS KPFKYQGLTI LVKKEIPRST
LDSFMQPFQ
    
```

**[ IDENTIFICATION ]**

TGGGCGGCGCTGGAGCCCAAGATCGTCAACATCGGCGGCTGGAGCGCGGCAAGCATGACAGATGTTCCGGAGGCAATAAACAAGCCATTAAGCGACACGCGCTCTTGGAGATCAGCTCAAGCGCACCTTCTGTGACCCACAAAGCCAAAGCGGATACAGATGGGCGCTGTGAGTGTGAGGACCTCATCTCTAGC  
 R A A C D P K I V N I G A V L S T R K H E Q M F R E A V N Q A N K R H G S W K I Q L N A T S V T H K P N A I Q M A L S V C E D L I S S



**Figure. Gene Sequencing (Extract)**

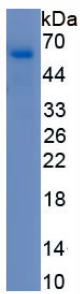


Figure. SDS-PAGE

**[ IMPORTANT NOTE ]**

The kit is designed for research use only, we will not be responsible for any issue if the kit was used in clinical diagnostic or any other procedures.