

**RPE806Hu01 200µg**

**Recombinant Glutamate Receptor, Ionotropic, N-Methyl-D-Aspartate 2A (GRIN2A)**

**Organism Species: *Homo sapiens (Human)***

***Instruction manual***

FOR RESEARCH USE ONLY

NOT FOR USE IN CLINICAL DIAGNOSTIC PROCEDURES

---

12th Edition (Revised in Aug, 2016)

**[ PROPERTIES ]**

**Source:** Prokaryotic expression

**Host:** *E.coli*

**Residues:** Pro31~Ala555

**Tags:** N-terminal His Tag

**Subcellular Location:** Membrane

**Purity:** > 80%

**Traits:** Freeze-dried powder

**Buffer formulation:** PBS, pH7.4, containing 0.01% SKL, 5% Trehalose.

**Original Concentration:** 80µg/mL

**Applications:** Positive Control; Immunogen; SDS-PAGE; WB.

(May be suitable for use in other assays to be determined by the end user.)

**Predicted isoelectric point:** 5.3

**Predicted Molecular Mass:** 62.5kDa

**Accurate Molecular Mass:** 63kDa as determined by SDS-PAGE reducing conditions.

**[ USAGE ]**

Reconstitute in ddH<sub>2</sub>O to a concentration of 0.1-0.5 mg/mL. Do not vortex.

**[ STORAGE AND STABILITY ]**

**Storage:** Avoid repeated freeze/thaw cycles.

Store at 2-8°C for one month.

Aliquot and store at -80°C for 12 months.

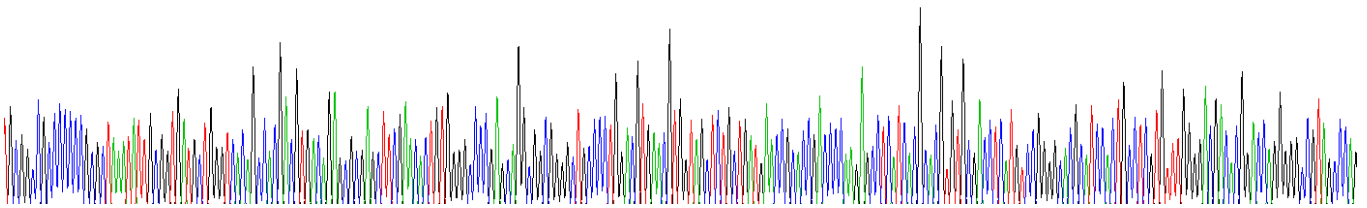
**Stability Test:** The thermal stability is described by the loss rate. The loss rate was determined by accelerated thermal degradation test, that is, incubate the protein at 37°C for 48h, and no obvious degradation and precipitation were observed. The loss rate is less than 5% within the expiration date under appropriate storage condition.

**[ SEQUENCE ]**

```

PPALNIAVML GSHSDVTERE
LRTLWGPEQA AGLPLDVNVV ALLMNRTDPK SLITHVCDLM SGARIHGLVF
GDDTDQEAVA QMLDFISSHT FVPILGIHGG ASMIMADKDP TSTFFQFGAS
IQQQATVMLK IMQDYDWHVF SLVTTIFPGY REFISFVKTT VDNSFVGWDM
QNVITLDTSF EDAKTQVQLK KIHSSVILLY CSKDEAVLIL SEARSLGLTG
YDFFWIVPSL VSGNTEIIPK EFPSGLISVS YDDWDYSLEA RVRDGIGILT
TAASSMLEKF SYIPEAKASC YGQMERPEVP MHTLHPFMVN VTWDGKDLSF
TEEGYQVHPR LVVIVLNKDR EWEKVGKWEN HTLSLRHAVW PRYKSFSDCE
PDDNHLSIIVT LEEAPFVIVE DIDPLTETCV RNTVPCRKFV KINNSTNEGM
NVKKCKGFC IDILKCLSRT VKFTYDLYLV TNGKHGKKVN NVWNGMIGEV
VYQRAVMAVG SLTINEERSE VVDFSVPFVE TGISVMVSRS NGTVSPSAFL
EPFSA
    
```

**[ IDENTIFICATION ]**



**Figure . Gene Sequencing (extract)**

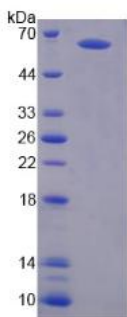


Figure. SDS-PAGE

**[ IMPORTANT NOTE ]**

The kit is designed for research use only, we will not be responsible for any issue if the kit was

used in clinical diagnostic or any other procedures.