

**RPE807Hu01 10µg**

**Recombinant Glutamate Receptor, Ionotropic, N-Methyl-D-Aspartate 2B (GRIN2B)**

**Organism Species: *Homo sapiens (Human)***

***Instruction manual***

FOR RESEARCH USE ONLY

NOT FOR USE IN CLINICAL DIAGNOSTIC PROCEDURES

---

13th Edition (Revised in Aug, 2023)

**[ PROPERTIES ]**

**Source:** Prokaryotic expression

**Host:** *E.coli*

**Residues:** Ile35~Asp557

**Tags:** N-terminal His and GST Tag

**Subcellular Location:** Membrane

**Purity:** > 95%

**Traits:** Freeze-dried powder

**Buffer formulation:** PBS, pH7.4, containing 0.01% SKL, 5% Trehalose .

**Original Concentration:** 350µg/mL

**Applications:** Positive Control; Immunogen; SDS-PAGE; WB.

(May be suitable for use in other assays to be determined by the end user.)

**Predicted isoelectric point:** 4.8

**Predicted Molecular Mass:** 89.0kDa

**Accurate Molecular Mass:** 89kDa as determined by SDS-PAGE reducing conditions.

**[ USAGE ]**

Reconstitute in 10mM PBS (pH7.4) to a concentration of 0.1-1.0 mg/mL. Do not vortex.

**[ STORAGE AND STABILITY ]**

**Storage:** Avoid repeated freeze/thaw cycles.

Store at 2-8°C for one month.

Aliquot and store at -80°C for 12 months.

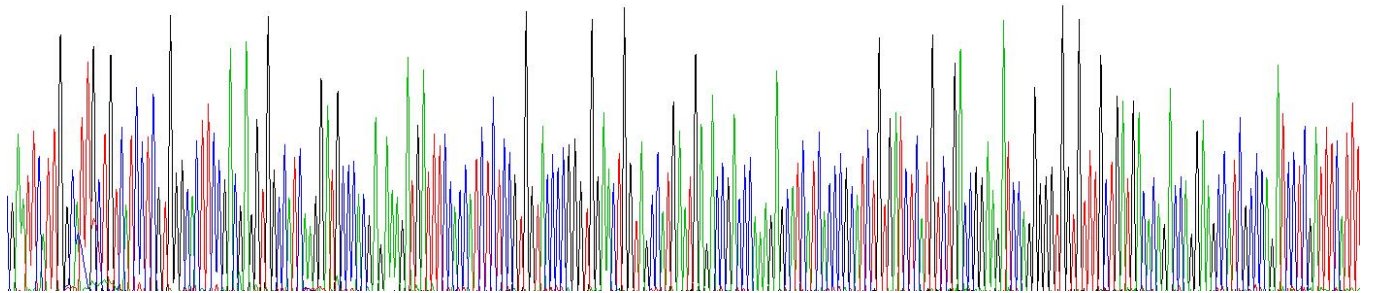
**Stability Test:** The thermal stability is described by the loss rate. The loss rate was determined by accelerated thermal degradation test, that is, incubate the protein at 37°C for 48h, and no obvious degradation and precipitation were observed. The loss rate is less than 5% within the expiration date under appropriate storage condition.

**[ SEQUENCE ]**

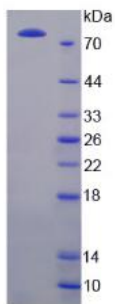
|            |            |            |            |            |
|------------|------------|------------|------------|------------|
|            |            |            | IGIAVI     | LVGTSDEVAI |
| KDAHEKDDFH | HLSVVPRVEL | VAMNETDPKS | IITRICDLMS | DRKIQGVVFA |
| DDTDQEAIQA | ILDFISAQTL | TPILGIHGGG | SMIMADKDES | SMFFQFGPSI |
| EQQASVMLNI | MEEYDWFIFS | IVTTYFPGYQ | DFVNKIRSTI | ENSFVWWELE |
| EVLLLDMSLD | DGDSKIQNQL | KKLQSPIILL | YCTKEEATYI | FEVANSVGLT |
| GYGYTWIVPS | LVAGDTRVTP | AEFPTGLISV | SYDEWDYGLP | ARVRDGIAII |
| TTAASDMLSE | HSFIPEPKSS | CYNTEKRIY  | QSNMLNRYLI | NVTFEGRNLS |
| FSEDGYQMHP | KLVIILLNKE | RKWERVGKWK | DKSLQMKYYV | WPRMCPETEE |
| QEDDHLSIVT | LEEAPFVIVE | SVDPLSGTCM | RNTVPCQKRI | VTENKTDEEP |
| GYIKKCKKGF | CIDILKKISK | SVKFTYDLYL | VTNGKHGKKI | NGTWNMGIGE |
| VVMKRAYMAV | GSLTINEERS | EVVDFSVPII | ETGISVMVSR | SNGTVSPSAF |
| LEPFSAD    |            |            |            |            |

**[ IDENTIFICATION ]**

GAATTGGATTCCTGTTGGCTTTTGGGCGTCCGATCGAGAGGATTTTCCCTCCTGCTGGATCCCGGTCGGCTGGATGCGCGCCAGAGATATGAGGATCTGTCGTGTCTGTCGGATTTGGGGGGTTCGTGTGTGTGTCGGACCGATGCTGCTGTGATTT



**Figure . Gene Sequencing (extract)**



**Figure. SDS-PAGE**

**[ IMPORTANT NOTE ]**

The kit is designed for research use only, we will not be responsible for any issue if the kit was

used in clinical diagnostic or any other procedures.