

**RPE809Hu01 100µg**

**Recombinant Glutamate Receptor, Ionotropic, N-Methyl-D-Aspartate 2D (GRIN2D)**

**Organism Species: *Homo sapiens (Human)***

***Instruction manual***

FOR RESEARCH USE ONLY

NOT FOR USE IN CLINICAL DIAGNOSTIC PROCEDURES

---

12th Edition (Revised in Aug, 2016)

**[ PROPERTIES ]**

**Source:** Prokaryotic expression

**Host:** *E.coli*

**Residues:** Phe28~Ala584

**Tags:** N-terminal His Tag

**Subcellular Location:** Membrane

**Purity:** > 90%

**Traits:** Freeze-dried powder

**Buffer formulation:** PBS, pH7.4, containing 0.01% SKL, 5% Trehalose .

**Original Concentration:** 700µg/mL

**Applications:** Positive Control; Immunogen; SDS-PAGE; WB.

(May be suitable for use in other assays to be determined by the end user.)

**Predicted isoelectric point:** 5.7

**Predicted Molecular Mass:** 63.7kDa

**Accurate Molecular Mass:** 64kDa as determined by SDS-PAGE reducing conditions.

**[ USAGE ]**

Reconstitute in 10mM PBS (pH7.4) to a concentration of 0.1-1.0 mg/mL. Do not vortex.

**[ STORAGE AND STABILITY ]**

**Storage:** Avoid repeated freeze/thaw cycles.

Store at 2-8°C for one month.

Aliquot and store at -80°C for 12 months.

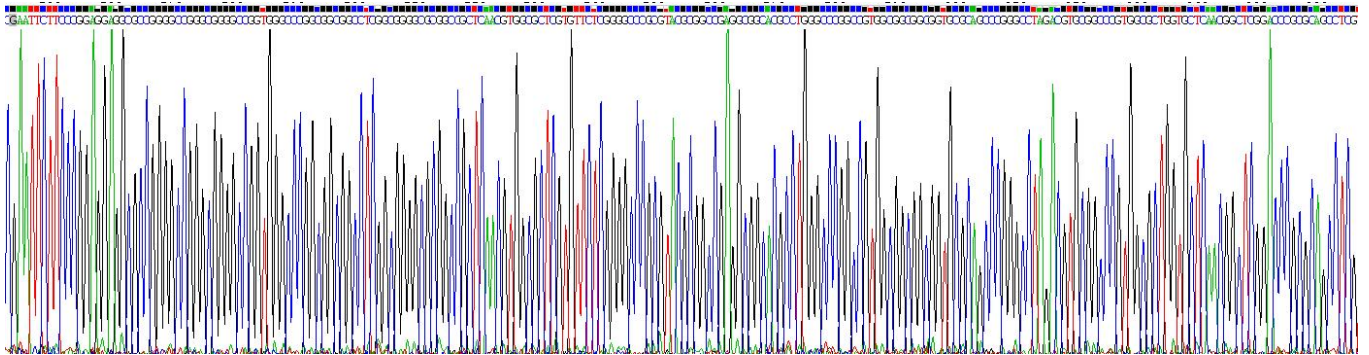
**Stability Test:** The thermal stability is described by the loss rate. The loss rate was determined by accelerated thermal degradation test, that is, incubate the protein at 37°C for 48h, and no obvious degradation and precipitation were observed. The loss rate is less than 5% within the expiration date under appropriate storage condition.

**[ SEQUENCE ]**

```

                                FPE EAPGPGGAGG PGGGLGGARP
LNVALVFSGP AYAAEAARLG PAVAAAVRSP GLDVRPVALV LNGSDPRSLV
LQLCDLLSGL RVHGVPFEDD SRAPAVAPIL DFLSAQTSLP IVAVHGGAL
VLTPKEKGST FLQLGSSTEQ QLQVIFEVLE EYDWTFSFVAV TTRAPGHRAF
LSYIEVLTDG SLVGWEHRGA LTLDPGAGEA VLSAQLRSVS AQIRLLFCAR
EEAEPVFRAA EEAGLTGSGY VWMVGPQLA GGGGSGAPGE PLLPGGAPL
PAGLFAVRSA GWRDDLARRV AAGVAVVARG AQALLRDYGF LPELGHDCRA
QNRTHRGESL HRYFMNITWD NRDYSFNEDG FLVNP SLVVI SLTRDRTWEV
VGSWEQQLTR LKYPLWSRYG RFLQPVDQTQ HLTVATLEER PFVIVEPADP
ISGTCIRDSV PCRSQLNRTH SPPDPAPRPE KRCKGFCID ILKRLAHTIG
FSYDLYLVTN GKHKKIDGV WNGMIGEVFY QRADMAIGSL TINEERSEIV
DFSVPFVETG ISVMVARSNG TVSPSAFLEP YSPA
    
```

**[ IDENTIFICATION ]**



**Figure . Gene Sequencing (extract)**

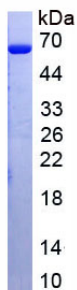


Figure. SDS-PAGE

**[ IMPORTANT NOTE ]**

The kit is designed for research use only, we will not be responsible for any issue if the kit was used in clinical diagnostic or any other procedures.