

RPD317Mu01 100µg
Recombinant Glycogen Synthase Kinase 3 Beta (GSK3b)
Organism Species: *Mus musculus* (Mouse)
Instruction manual

FOR RESEARCH USE ONLY
NOT FOR USE IN CLINICAL DIAGNOSTIC PROCEDURES

12th Edition (Revised in Aug, 2016)

[PROPERTIES]

Source: Prokaryotic expression

Host: *E.coli*

Residues: Lys122~Thr375

Tags: N-terminal His Tag

Subcellular Location: Membrane, Nucleus, Cytoplasm

Purity: > 97%

Traits: Freeze-dried powder

Buffer formulation: 20mM Tris, 150mM NaCl, pH8.0, containing 0.01% SKL, 5% Trehalose.

Original Concentration: 200µg/mL

Applications: Positive Control; Immunogen; SDS-PAGE; WB.

(May be suitable for use in other assays to be determined by the end user.)

Predicted isoelectric point: 7.8

Predicted Molecular Mass: 32.6kDa

Accurate Molecular Mass: 33kDa as determined by SDS-PAGE reducing conditions.

[USAGE]

Reconstitute in 20mM Tris, 150mM NaCl (pH8.0) to a concentration of 0.1-1.0 mg/mL. Do not vortex.

[STORAGE AND STABILITY]

Storage: Avoid repeated freeze/thaw cycles.

Store at 2-8°C for one month.

Aliquot and store at -80°C for 12 months.

Stability Test: The thermal stability is described by the loss rate. The loss rate was determined by accelerated thermal degradation test, that is, incubate the protein at 37°C for 48h, and no obvious degradation and precipitation were observed. The loss rate is less than 5% within the expiration date under appropriate storage condition.

[SEQUENCE]

KKDEVYLNL VLDYVPETVY RVARHYSRAK
 QTLPVIYVKL YMYQLFRSLA YIHSFGICHR DIKPQNLLLD PDTAVLKLCD
 FGSAKQLVRG EPNVSYICSR YYRAPELIFG ATDYTSSIDV WSAGCVLAEL
 LLGQPIFPD SGVDQLVEII KVLGTPTREQ IREMNPNYTE FKFPQIKAHP
 WTKVFRPRTPEAIALCSRL LEYTPARLT PLEACAHSEF DELRDPNVKL
 PNGRDTPALF NFTTQELSSN PPLAT

[IDENTIFICATION]

G A A T T C A A G A A A G A T G A G S T C T A T C T T A A T C T G G T C T G A C T A T G T T C O G S A A A G I G T A T C A G A G T T G C C A G A C T A T A G T O G A G C A A A G A G A C C T C C C T G T G A T T A T G T C A A G T T G A T A T G T A T C A C C T G T T C O G A G T T T A G C T A T A T C C A T T C C T T T G G A A T C T G C A T C O G S A T A T T A A A C G G A G A A C C T C T T G T T G C

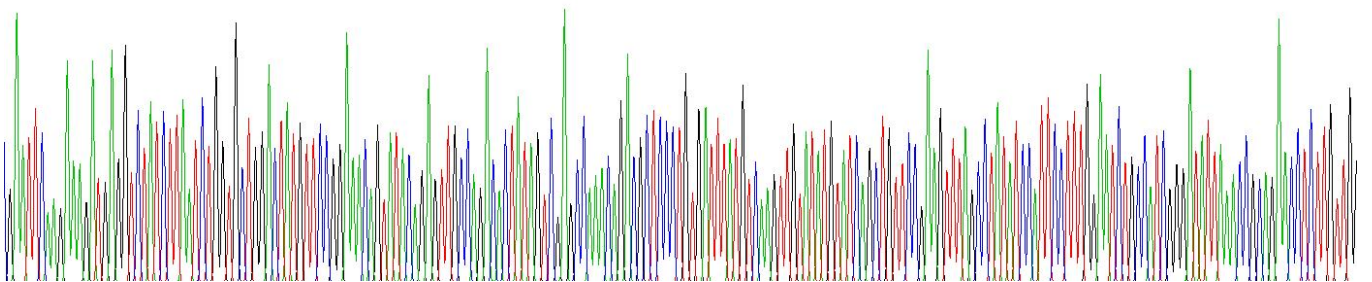


Figure . Gene Sequencing (extract)

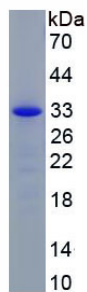


Figure. SDS-PAGE

[IMPORTANT NOTE]

The kit is designed for research use only, we will not be responsible for any issue if the kit was used in clinical diagnostic or any other procedures.