

**RPA998Mu01 1**

**Recombinant Glypican 4 (GPC4)**

**Organism Species: *Mus musculus* (Mouse)**

***Instruction manual***

FOR RESEARCH USE ONLY

NOT FOR USE IN CLINICAL DIAGNOSTIC PROCEDURES

---

12th Edition (Revised in Aug, 2016)

## [ **PROPERTIES** ]

**Source:** Prokaryotic expression

**Host:** *E.coli*

**Residues:** Thr220~Gly426

**Tags:** N-terminal His Tag

**Subcellular Location:** Membrane, Extracellular matrix

**Purity:** > 97%

**Traits:** Freeze-dried powder

**Buffer formulation:** 20mM Tris, 150mM NaCl, pH8.0, containing 1mM EDTA, 1mM DTT, 0.01% SKL, 5% Trehalose and Proclin300.

**Original Concentration:** 200µg/mL

**Applications:** Positive Control; Immunogen; SDS-PAGE; WB.

(May be suitable for use in other assays to be determined by the end user.)

**Predicted isoelectric point:** 6.5

**Predicted Molecular Mass:** 24.2kDa

**Accurate Molecular Mass:** 27kDa as determined by SDS-PAGE reducing conditions.

## [ **USAGE** ]

Reconstitute in 20mM Tris, 150mM NaCl (pH8.0) to a concentration of 0.1-1.0 mg/mL. Do not vortex.

## [ **STORAGE AND STABILITY** ]

**Storage:** Avoid repeated freeze/thaw cycles.

Store at 2-8°C for one month.

Aliquot and store at -80°C for 12 months.

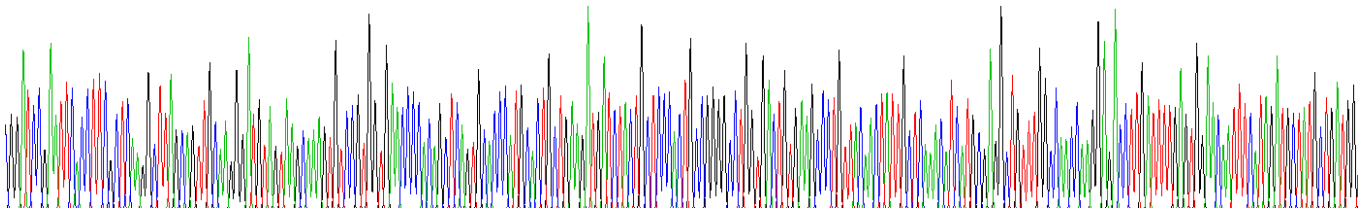
**Stability Test:** The thermal stability is described by the loss rate. The loss rate was determined by accelerated thermal degradation test, that is, incubate the protein at 37°C for 48h, and no obvious degradation and precipitation were observed. The loss rate is less than 5% within the expiration date under appropriate storage condition.

**[ SEQUENCE ]**

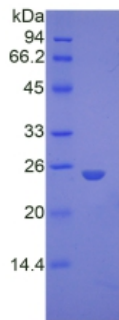
```
T  FAQGLAVARD  VSKVSVVNP  TAQCTHALLK
MIYCSHCRGL  VTKPCYNYC  SNIMRGCLAN  QGDLDFEWN  FIDAMLMVAE
RLEGPFNIES  VMDPIDVKIS  DAIMNMQDNS  VQVSQKVFQ  CGPPKLPAG
RISRSISESA  FSARFRPYHP  EQRPTTAAGT  SLDRLVTDVK  EKLKQAKKFW
SSLPSTVCND  ERMAAGNENE  DDCWNG
```

**[ IDENTIFICATION ]**

GGATCGATTCCCTCCCTAGGCTTBAAGTTGAGGGATGAGAGAGGAGTTCGTGGACCCGACGCTGAGTGAATGCTGCTGAGTGGATCTGCTCCGCTCCCGGCTGGGCTGGAGCCCTGTAGACTATTCCTAAACATCTGGAGCCGTTCCGACCAAGGGACTTGATTGAGTGAATTCATGAGCTATCTGATG



**Figure . Gene Sequencing (extract)**



**[ IMPORTANT NOTE ]**

The kit is designed for research use only, we will not be responsible for any issue if the kit was used in clinical diagnostic or any other procedures.