

**RPA600Hu01 1mg**

**Recombinant Granzyme B (GZMB)**

**Organism Species: *Homo sapiens* (Human)**

***Instruction manual***

FOR RESEARCH USE ONLY

NOT FOR USE IN CLINICAL DIAGNOSTIC PROCEDURES

---

13th Edition (Revised in Aug, 2023)

**[ PROPERTIES ]**

**Source:** Prokaryotic expression

**Host:** *E.coli*

**Residues:** Ile21~Tyr247

**Tags:** N-terminal His Tag

**Subcellular Location:** Cytoplasm

**Purity:** > 95%

**Traits:** Freeze-dried powder

**Buffer formulation:** PBS, pH7.4, containing 0.01% SKL, 5% Trehalose .

**Original Concentration:** 3000µg/mL

**Applications:** Positive Control; Immunogen; SDS-PAGE; WB.

(May be suitable for use in other assays to be determined by the end user.)

**Predicted isoelectric point:** 9.7

**Predicted Molecular Mass:** 29.4kDa

**Accurate Molecular Mass:** 31kDa as determined by SDS-PAGE reducing conditions.

**[ USAGE ]**

Reconstitute in 10mM PBS (pH7.4) to a concentration of 0.1-1.0 mg/mL. Do not vortex.

**[ STORAGE AND STABILITY ]**

**Storage:** Avoid repeated freeze/thaw cycles.

Store at 2-8°C for one month.

Aliquot and store at -80°C for 12 months.

**Stability Test:** The thermal stability is described by the loss rate. The loss rate was determined by accelerated thermal degradation test, that is, incubate the protein at 37°C for 48h, and no obvious degradation and precipitation were observed. The loss rate is less than 5% within the expiration date under appropriate storage condition.

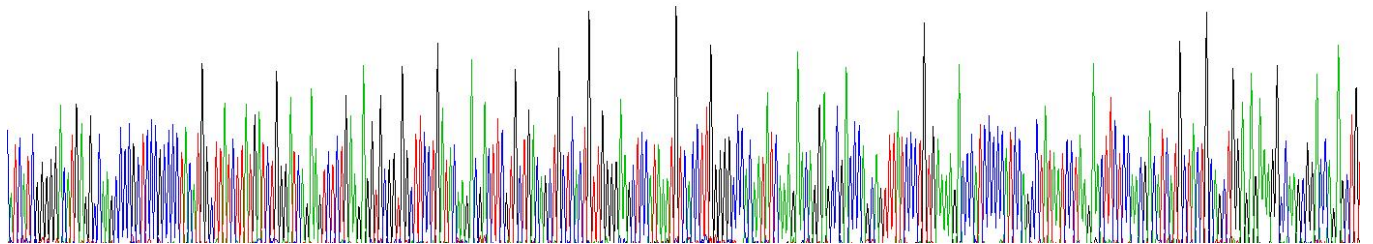
**[ SEQUENCE ]**

```

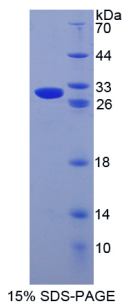
                    I I G G H E A K P H   S R P Y M A Y L M I   W D Q K S L K R C G
G F L I R D D F V L   T A A H C W G S S I   N V T L G A H N I K   E Q E P T Q Q F I P   V K R P I P H P A Y
N P K N F S N D I M   L L Q L E R K A K R   T R A V Q P L R L P   S N K A Q V K P G Q   T C S V A G W G Q T
A P L G K H S H T L   Q E V K M T V Q E D   R K C E S D L R H Y   Y D S T I E L C V G   D P E I K K T S F K
G D S G G P L V C N   K V A Q G I V S Y G   R N N G M P P R A C   T K V S S F V H W I   K K T M K R Y
  
```

**[ IDENTIFICATION ]**

I I G G H E A K P R S R P Y M A Y L M I V D Q K S L K R C G G F L I Q D D F V L T A A H C V G S S I N V T L G A H N I K E Q E P T Q Q F I P V K R P I P H P A Y N P K N F S N D I M L L Q L E R K A K R T R A V



**Figure. Gene Sequencing (Extract)**



**Figure. SDS-PAGE**

**[ IMPORTANT NOTE ]**

The kit is designed for research use only, we will not be responsible for any issue if the kit was used in clinical diagnostic or any other procedures.