

RPD025GE02 100µg
Recombinant Green Fluorescent Protein (GFP)
Organism Species: *Pan-species (General)*
Instruction manual

FOR RESEARCH USE ONLY
NOT FOR USE IN CLINICAL DIAGNOSTIC PROCEDURES

12th Edition (Revised in Aug, 2016)

[PROPERTIES]

Source: Prokaryotic expression

Host: *E.coli*

Residues: Met1~Lys238

Tags: N-terminal His Tag

Subcellular Location: Secreted

Purity: > 90%

Traits: Liquid

Buffer formulation: PBS, pH7.4, containing 20%Glycerine.

Original Concentration: 1500µg/mL

Applications: Positive Control; Immunogen; SDS-PAGE; WB.

(May be suitable for use in other assays to be determined by the end user.)

Predicted isoelectric point: 5.1

Predicted Molecular Mass: 34.3kDa

Accurate Molecular Mass: 37kDa as determined by SDS-PAGE reducing conditions.

[USAGE]

Do not vortex.

[STORAGE AND STABILITY]

Storage: Avoid repeated freeze/thaw cycles.

Store at 2-8°C for one month.

Aliquot and store at -80°C for 12 months.

Stability Test: The thermal stability is described by the loss rate. The loss rate was determined by accelerated thermal degradation test, that is, incubate the protein at 37°C for 48h, and no obvious degradation and precipitation were observed. The loss rate is less than 5% within the expiration date under appropriate storage condition.

[SEQUENCE]

```
MSKGEELFTG VVPILVELDG DVNGHKFSVS GELEGDATYG KLTLKFICTT  
GKLPVPWPTL VTTFSYGVQC FSRYPDHMKQ HDFFKSAMPE GYVQERTIFF  
KDDGNYKTRA EVKFEEDTLV NRIELKGIDF KEDGNILGHK LEYNYNSHNV  
YIMADKQKNG IKVNFKIRHN IEDGSVQLAD HYQNTPIGD GPVLLPDNHY  
LSTQSALSKD PNEKRDMVL LEFVTAAGIT HGMDELYK
```

[IDENTIFICATION]

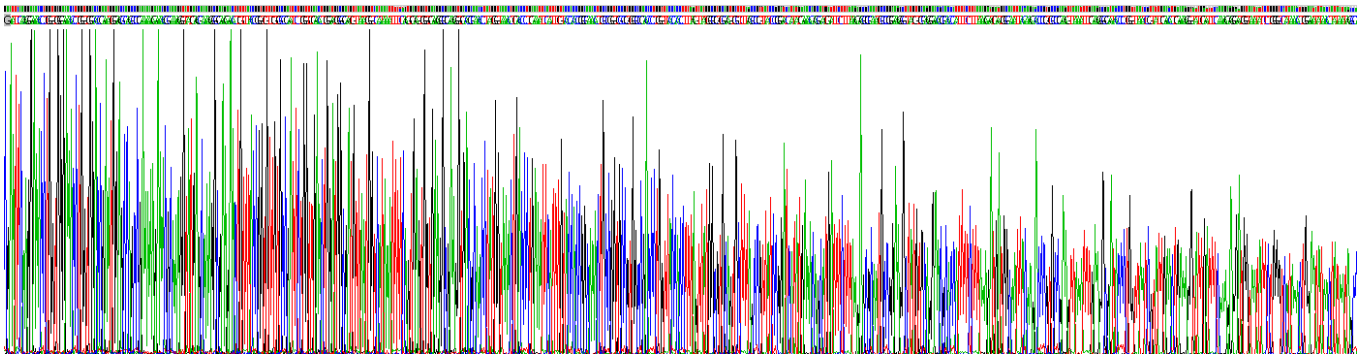


Figure . Gene Sequencing (extract)

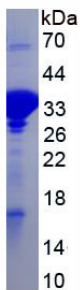


Figure. SDS-PAGE

[IMPORTANT NOTE]

The kit is designed for research use only, we will not be responsible for any issue if the kit was used in clinical diagnostic or any other procedures.