

RPB062Ra01 50µg

Recombinant Heat Shock 70kDa Protein 1 Like Protein (HSPA1L)

Organism Species: *Rattus norvegicus* (Rat)

Instruction manual

FOR RESEARCH USE ONLY

NOT FOR USE IN CLINICAL DIAGNOSTIC PROCEDURES

12th Edition (Revised in Aug, 2016)

[**PROPERTIES**]

Source: Prokaryotic expression

Host: *E.coli*

Residues: Met1~Asp641

Tags: N-terminal His Tag

Subcellular Location: Membrane, Nucleus, Cytoplasm

Purity: > 97%

Traits: Freeze-dried powder

Buffer formulation: 20mM Tris, 150mM NaCl, pH8.0, containing 0.01% SKL, 5% Trehalose.

Original Concentration: 60µg/mL

Applications: Positive Control; Immunogen; SDS-PAGE; WB.

(May be suitable for use in other assays to be determined by the end user.)

Predicted isoelectric point: 6.1

Predicted Molecular Mass: 72.1kDa

Accurate Molecular Mass: 44&70kDa as determined by SDS-PAGE reducing conditions.

Phenomenon explanation:

The possible reasons that the actual band size differs from the predicted are as follows:

1. Splice variants: Alternative splicing may create different sized proteins from the same gene.
2. Relative charge: The composition of amino acids may affect the charge of the protein.
3. Post-translational modification: Phosphorylation, glycosylation, methylation etc.
4. Post-translation cleavage: Many proteins are synthesized as pro-proteins, and then cleaved to give the active form.
5. Polymerization of the target protein: Dimerization, multimerization etc.

[**USAGE**]

Reconstitute in ddH₂O to a concentration of 0-0.5 mg/mL. Do not vortex.

[**STORAGE AND STABILITY**]

Storage: Avoid repeated freeze/thaw cycles.

Store at 2-8°C for one month.

Aliquot and store at -80°C for 12 months.

Stability Test: The thermal stability is described by the loss rate. The loss rate was determined by accelerated thermal degradation test, that is, incubate the protein at 37°C for 48h, and no obvious degradation and precipitation were observed. The loss rate is less than 5% within the expiration date under appropriate storage condition.

[SEQUENCE]

```

MAANKGMAIG IDLGTTYSCV GVFQHGKVEI IANDQGNRTT PSYVAFTDTE
RLIGDAAKNQ VAMNPQNTVF DAKRLIGRKF NDPVVQSDMK LWPQVINEA
GKPKVLVSYK GEKKAFFPEE ISSMVLTKMK ETAEAF LGHS VTNVITVPA
YFNDSQRQAT KDAGVIAGLN VLRIINEPTA AAIAYGLDKG SHGERHVLIF
DLGGGTFDVS ILTIDDGIFE VKATAGDTHL GGEDFDNRLV SHFVEEFKRK
HKKDISQNKR AVRRLRTACE RAKRTLSSST QANLEIDSLY EGIDFYTSIT
RARFEELCAD LFRGTLEPVE KSLRDAKMDK AKIHDIVLVG GSTRIKPVQK
LLQDYFNDRD LNKSNPDEA VAYGAAVQAA ILMGDKSEKV QDLLLLDVAP
LSLGLETAGG VMTVLIKRNS TIPTKQTQIF TTYSDNQPGV LIQVYEGERA
MTRDNNLLGR FDLTGIPPAP RGVPQIEVTF DIDANGILNV TAMDKSTGKA
NKITITNDKG RLSKEEIERM VQEAERYKAE DEGQREKIAA KNALESYAFN
MKSAVGDEGL KDKISESDDK KILDKCSEVL SWLEANQLAE KEEFDHKRKE
LENMCPNIIT KLYQSGCTGP TCGPYTPGR AATGPTIEEV D
  
```

[IDENTIFICATION]

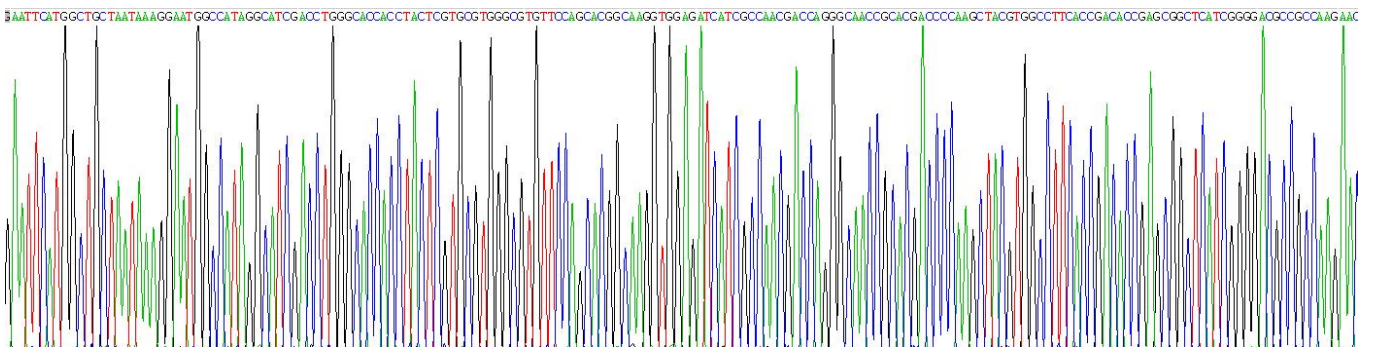


Figure . Gene Sequencing (extract)

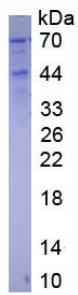


Figure. SDS-PAGE

[IMPORTANT NOTE]

The kit is designed for research use only, we will not be responsible for any issue if the kit was used in clinical diagnostic or any other procedures.