

**RPD503Hu01 1mg**  
**Recombinant Heat Shock 70kDa Protein 14 (HSPA14)**  
**Organism Species: *Homo sapiens (Human)***  
***Instruction manual***

FOR RESEARCH USE ONLY  
NOT FOR USE IN CLINICAL DIAGNOSTIC PROCEDURES

---

12th Edition (Revised in Aug, 2016)

**[ PROPERTIES ]**

**Source:** Prokaryotic expression

**Host:** *E.coli*

**Residues:** Met1~Ser509

**Tags:** N-terminal His Tag

**Subcellular Location:** Cytoplasm

**Purity:** > 90%

**Traits:** Freeze-dried powder

**Buffer formulation:** PBS, pH7.4, containing 0.01% SKL, 5% Trehalose.

**Original Concentration:** 800µg/mL

**Applications:** Positive Control; Immunogen; SDS-PAGE; WB.

(May be suitable for use in other assays to be determined by the end user.)

**Predicted isoelectric point:** 5.8

**Predicted Molecular Mass:** 56.0kDa

**Accurate Molecular Mass:** 56kDa as determined by SDS-PAGE reducing conditions.

**[ USAGE ]**

Reconstitute in 10mM PBS (pH7.4) to a concentration of 0.1-1.0 mg/mL. Do not vortex.

**[ STORAGE AND STABILITY ]**

**Storage:** Avoid repeated freeze/thaw cycles.

Store at 2-8°C for one month.

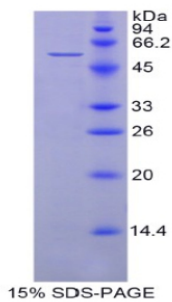
Aliquot and store at -80°C for 12 months.

**Stability Test:** The thermal stability is described by the loss rate. The loss rate was determined by accelerated thermal degradation test, that is, incubate the protein at 37°C for 48h, and no obvious degradation and precipitation were observed. The loss rate is less than 5% within the expiration date under appropriate storage condition.

**[ SEQUENCE ]**

MAAIGVHLGC TSACVAVYKD GRAGVVANDA GDRVTPAVVA YSENEEIVGL  
AAKQSRIRNI SNTVMKVKQI LGRSSSDPQA QKYIAESKCL VIEKNGKLRV  
EIDTGEETKF VNPEDVARLI FSKMKETAHS VLGSDANDVV ITVPDFGK  
QKNALGEAAR AAGFNVLRLLI HEPsAALLAY GIGQDSPTGK SNILVFKLGG  
TSLSLVMEV NSGIYRVLST NTDDNIGGAH FTETLAQYLA SEFQRSFKHD  
VRGNARAMMK LTNSAEVAKH SLSTLGSANC FLDSLVEGQD FDCNVSRAF  
ELLCSPFNK CIEAIRGLLD QNGFTADDIN KVVLCGGSSR IPKLQQLIKD  
LFPVAVLLNS IPPDEVIPIG AAIEAGILIG KENLLVEDSL MIECSARDIL  
VKGVDSESGAS RFTVLFPSGT PLPARRQHTL QAPGSISSVC LELYESDGKN  
SAKEETKFAQ VVLQDLKKE NGLRDILAVL TMKRDGSLHV TCTDQETGKC  
EAISIEIAS

**[ IDENTIFICATION ]**



**[ IMPORTANT NOTE ]**

The kit is designed for research use only, we will not be responsible for any issue if the kit was used in clinical diagnostic or any other procedures.