

**RPA266Hu01 1mg**

**Recombinant Heat Shock Protein 47 (HSP47)**

**Organism Species: *Homo sapiens (Human)***

***Instruction manual***

FOR RESEARCH USE ONLY

NOT FOR USE IN CLINICAL DIAGNOSTIC PROCEDURES

---

13th Edition (Revised in Aug, 2023)

**[ PROPERTIES ]**

**Source:** Prokaryotic expression

**Host:** *E.coli*

**Residues:** Pro30~Leu418

**Tags:** N-terminal His Tag

**Subcellular Location:** Endoplasmic reticulum lumen

**Purity:** > 80%

**Traits:** Freeze-dried powder

**Buffer formulation:** PBS, pH7.4, containing 0.01% SKL, 5% Trehalose .

**Original Concentration:** 2000µg/mL

**Applications:** Positive Control; Immunogen; SDS-PAGE; WB.

(May be suitable for use in other assays to be determined by the end user.)

**Predicted isoelectric point:** 8.7

**Predicted Molecular Mass:** 47.4kDa

**Accurate Molecular Mass:** 47kDa as determined by SDS-PAGE reducing conditions.

**[ USAGE ]**

Reconstitute in 10mM PBS (pH7.4) to a concentration of 0.1-1.0 mg/mL. Do not vortex.

**[ STORAGE AND STABILITY ]**

**Storage:** Avoid repeated freeze/thaw cycles.

Store at 2-8°C for one month.

Aliquot and store at -80°C for 12 months.

**Stability Test:** The thermal stability is described by the loss rate. The loss rate was determined by accelerated thermal degradation test, that is, incubate the protein at 37°C for 48h, and no obvious degradation and precipitation were observed. The loss rate is less than 5% within the expiration date under appropriate storage condition.

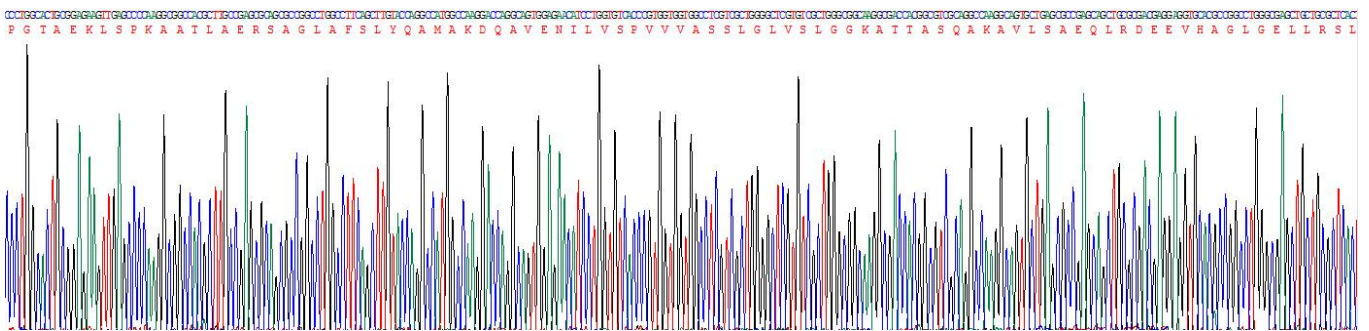
**[ SEQUENCE ]**

```

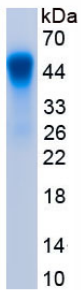
P  GTAEKLSPKA  ATLAERSAGL
AFSLYQAMAK  DQAVENILVS  PVVVASSLGL  VSLGGKATTA  SQAKAVLSAE
QLRDEEVHAG  LGELLRSLSN  STARNVTWKL  GSRLYGPSSV  SFADDFVRSS
KQHYNCEHSK  INFRDKRSAL  QSINEWAAQT  TDGKLPEVTK  DVERTDGALL
VNAMFFKPHW  DEKFHHKMVD  NRGFMVTRSY  TVGVMMHRT  GLYNYDDEK
EKLQIVEMPL  AHKLSSLIIL  MPHVEPLER  LEKLLTKEQL  KIWMGKMQKK
AVAISLPKGV  VEVTHDLQKH  LAGLGLTEAI  DKNKADLSRM  SGKKDLYLAS
VFHATAFELD  TDGNPFDQDI  YGREELRSPK  LFYADHPFIF  LVRDTQSGSL
LFIGRLVRPK  GDKMRDEL

```

**[ IDENTIFICATION ]**



**Figure. Gene Sequencing (Extract)**



**Figure. SDS-PAGE**

**[ IMPORTANT NOTE ]**

The kit is designed for research use only, we will not be responsible for any issue if the kit was used in clinical diagnostic or any other procedures.