

**RPB876Mu02 10ug**

**Recombinant High Mobility Group Nucleosome Binding Domain Protein 1 (HMGN1)**

**Organism Species: *Mus musculus* (Mouse)**

***Instruction manual***

FOR RESEARCH USE ONLY

NOT FOR USE IN CLINICAL DIAGNOSTIC PROCEDURES

---

12th Edition (Revised in Aug, 2016)

## [ **PROPERTIES** ]

**Source:** Prokaryotic expression

**Host:** *E.coli*

**Residues:** Met1~Asp96

**Tags:** N-terminal His and GST Tag

**Subcellular Location:** Nucleus, Cytoplasm

**Purity:** > 90%

**Traits:** Freeze-dried powder

**Buffer formulation:** PBS, pH7.4, containing 0.01% SKL, 5% Trehalose.

**Original Concentration:** 200µg/mL

**Applications:** Positive Control; Immunogen; SDS-PAGE; WB.

(May be suitable for use in other assays to be determined by the end user.)

**Predicted isoelectric point:** 9.9

**Predicted Molecular Mass:** 39.3kDa

**Accurate Molecular Mass:** 45kDa as determined by SDS-PAGE reducing conditions.

### **Phenomenon explanation:**

The possible reasons that the actual band size differs from the predicted are as follows:

1. Splice variants: Alternative splicing may create different sized proteins from the same gene.
2. Relative charge: The composition of amino acids may affect the charge of the protein.
3. Post-translational modification: Phosphorylation, glycosylation, methylation etc.
4. Post-translation cleavage: Many proteins are synthesized as pro-proteins, and then cleaved to give the active form.
5. Polymerization of the target protein: Dimerization, multimerization etc.

## [ **USAGE** ]

Reconstitute in 10mM PBS (pH7.4) to a concentration of 0.1-1.0 mg/mL. Do not vortex.

## [ **STORAGE AND STABILITY** ]

**Storage:** Avoid repeated freeze/thaw cycles.

Store at 2-8°C for one month.

Aliquot and store at -80°C for 12 months.

**Stability Test:** The thermal stability is described by the loss rate. The loss rate was determined by accelerated thermal degradation test, that is, incubate the protein at 37°C for 48h, and no obvious degradation and precipitation were observed. The loss rate is less than 5% within the expiration date under appropriate storage condition.

**[ SEQUENCE ]**

MPKRKVSADG AAKAEPKRRS ARLSAKPAPA KVDAPKPKAA GKDKASDKKV  
 QIKGKRGAKG KQADVADQQT TELPAENGET ENQSPASEEE KEAKSD

**[ IDENTIFICATION ]**

ATGCGCCATGAGGAGGTTAGCGCGGATGGAGCGGCAAGCGCGGCTCCGCGGCTGTCCGCAAGCCCGCCCTGCGAGGTGGCCGAGGCGCAAGGCGCGGGGAAAGGTTAAGCCATGACCAAAAAGTGGAGTAAAGGGGAGGGGGGAGGGGCAAGCGCTGACCGTGGCTGACCGCAAGCCGAGAGCTGCGTGGAAAATGGAGG  
 M P H R K V S A D G A A K A E P K R R S A R L S A K P A P A K V D A K P T K A A G K D K A S D K K V Q I K G K R G A K G K Q A D V A D Q Q T T E L P A E N G E

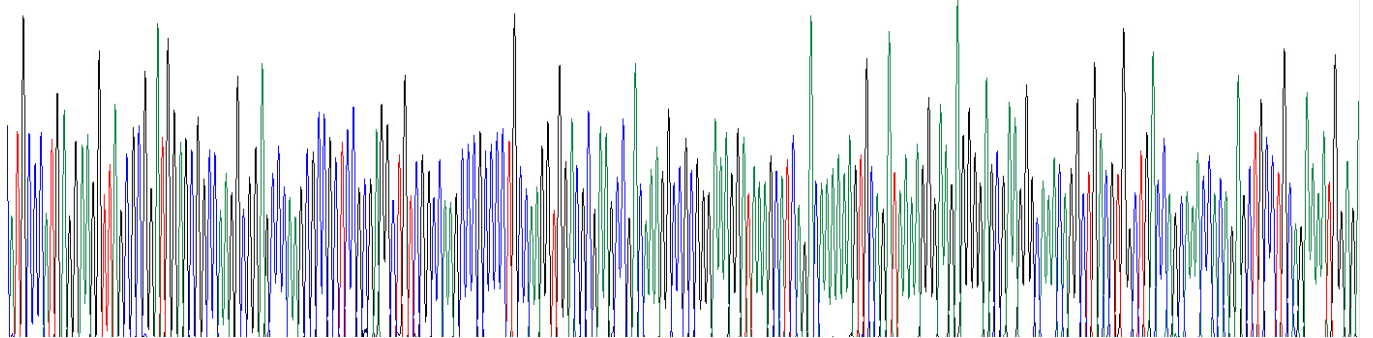


Figure . Gene Sequencing (extract)

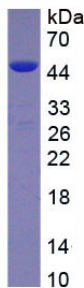


Figure. SDS-PAGE

**[ IMPORTANT NOTE ]**

The kit is designed for research use only, we will not be responsible for any issue if the kit was used in clinical diagnostic or any other procedures.