

**RPC206Hu01 100µg**  
**Recombinant Histone Deacetylase 1 (HDAC1)**  
**Organism Species: *Homo sapiens (Human)***  
***Instruction manual***

FOR RESEARCH USE ONLY  
NOT FOR USE IN CLINICAL DIAGNOSTIC PROCEDURES

---

13th Edition (Revised in Aug, 2023)

**[ PROPERTIES ]**

**Source:** Prokaryotic expression

**Host:** *E.coli*

**Residues:** Met1~Ala482

**Tags:** N-terminal His Tag

**Subcellular Location:** Nucleus

**Purity:** > 90%

**Traits:** Freeze-dried powder

**Buffer formulation:** PBS, pH7.4, containing 0.01% SKL, 5% Trehalose .

**Original Concentration:** 200µg/mL

**Applications:** Positive Control; Immunogen; SDS-PAGE; WB.

(May be suitable for use in other assays to be determined by the end user.)

**Predicted isoelectric point:** 5.3

**Predicted Molecular Mass:** 58.8kDa

**Accurate Molecular Mass:** 22&70kDa as determined by SDS-PAGE reducing conditions.

**Phenomenon explanation:**

The possible reasons that the actual band size differs from the predicted are as follows:

1. Splice variants: Alternative splicing may create different sized proteins from the same gene.
2. Relative charge: The composition of amino acids may affects the charge of the protein.
3. Post-translational modification: Phosphorylation, glycosylation, methylation etc.
4. Post-translation cleavage: Many proteins are synthesized as pro-proteins, and then cleaved to give the active form.
5. Polymerization of the target protein: Dimerization, multimerization etc.

**[ USAGE ]**

Reconstitute in ddH<sub>2</sub>O to a concentration of 0.1-0.5 mg/mL. Do not vortex.

**[ STORAGE AND STABILITY ]**

**Storage:** Avoid repeated freeze/thaw cycles.

Store at 2-8°C for one month.

Aliquot and store at -80°C for 12 months.

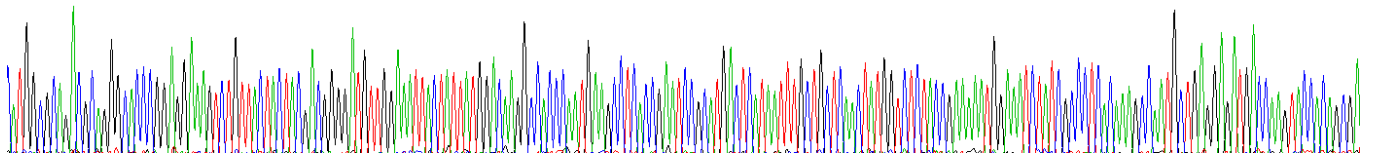
**Stability Test:** The thermal stability is described by the loss rate. The loss rate was determined by accelerated thermal degradation test, that is, incubate the protein at 37°C for 48h, and no obvious degradation and precipitation were observed. The loss rate is less than 5% within the expiration date under appropriate storage condition.

[ **SEQUENCE** ]

```
MAQTQGTRRK VCYYYDGDVG NYYYYGQGHM KPHRIRMTHN LLLNYGLYRK
MEIYRPHKAN AEEMTKYHSD DYIKFLRSIR PDNMSEYSKQ MQRFNVEDC
PVPDGLFEFC QLSTGGSVAS AVKLNKQQT D IAVNWAGGLH HAKKSEASGF
CYVNDIVLAI LELLKYHQRV LYIDIDIHHG DGVEEAFYTT DRVMTVSFHK
YGEYFPGTGD LRDIGAGK GK YYAVNYPLRD GIDDES YEAI FKPVMSKVME
MFQPSAVVLQ CGSDSLSGDR LGCFNLTIK G HAKC VEFVKS FNL PMLMLGG
GGYTIRNVAR CWTYETAVAL DTEIPNELPY NDYFEYFGPD FKLHISPSNM
TNQNTNEYLE KIKQRLFENL RMLPHAPGVQ MQAIPEDAIP EESGDEDEDD
PDKRISICSS DKRIACEEEF SDSEEEGEGG RKNSSNFKKA KRVKTEDEKE
KDPEEKKEVT EEEKTKKEEP EAKGVKEEVK LA
```

[ **IDENTIFICATION** ]

TATGCGCAGTGCAGGGCCACCGGAGGAAAGTCTGTTACTAAGACGCGGSATGTGGAAATTAATAATGSGCAGGCGCCCAATGAAAGCTCACCGGAATCCCAATGACTCATTAATTTCTCTCAGCTATGCTCTA  
CGGAAAAATCGAAATCTATCCCGCTCACAAAGCCAAATCTGAGAGATGCACAAAGTAAOCCAGGGA  
H A Q T Q G T R R K V C Y Y Y D G D V G N Y Y Y G Q G H P M K P H R I R H T H N L L L L N Y G L Y R K H E I Y R P H K A N A E E H T K Y H S D



**Figure. Gene Sequencing (Extract)**

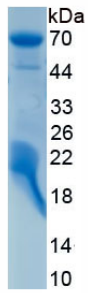


Figure. SDS-PAGE

**[ IMPORTANT NOTE ]**

The kit is designed for research use only, we will not be responsible for any issue if the kit was used in clinical diagnostic or any other procedures.