

**RPC206Mu01 10 $\mu$ g**  
**Recombinant Histone Deacetylase 1 (HDAC1)**  
**Organism Species: *Mus musculus* (Mouse)**  
***Instruction manual***

FOR RESEARCH USE ONLY  
NOT FOR USE IN CLINICAL DIAGNOSTIC PROCEDURES

---

13th Edition (Revised in Aug, 2023)

**[ PROPERTIES ]**

**Source:** Prokaryotic expression

**Host:** *E.coli*

**Residues:** Met1~Ala482

**Tags:** N-terminal His Tag

**Subcellular Location:** Nucleus

**Purity:** > 95%

**Traits:** Freeze-dried powder

**Buffer formulation:** 20mM Tris, 150mM NaCl, pH8.0, containing 1mM EDTA, 1mM DTT, 0.01% SKL, 5% Trehalose .

**Original Concentration:** 200µg/mL

**Applications:** Positive Control; Immunogen; SDS-PAGE; WB.

(May be suitable for use in other assays to be determined by the end user.)

**Predicted isoelectric point:** 5.2

**Predicted Molecular Mass:** 58.8kDa

**Accurate Molecular Mass:** 28&70kDa as determined by SDS-PAGE reducing conditions.

**Phenomenon explanation:**

The possible reasons that the actual band size differs from the predicted are as follows:

1. Splice variants: Alternative splicing may create different sized proteins from the same gene.
2. Relative charge: The composition of amino acids may affects the charge of the protein.
3. Post-translational modification: Phosphorylation, glycosylation, methylation etc.
4. Post-translation cleavage: Many proteins are synthesized as pro-proteins, and then cleaved to give the active form.
5. Polymerization of the target protein: Dimerization, multimerization etc.

**[ USAGE ]**

Reconstitute in 20mM Tris, 150mM NaCl (pH8.0) to a concentration of 0.1-1.0 mg/mL. Do not vortex.

**[ STORAGE AND STABILITY ]**

**Storage:** Avoid repeated freeze/thaw cycles.

Store at 2-8°C for one month.

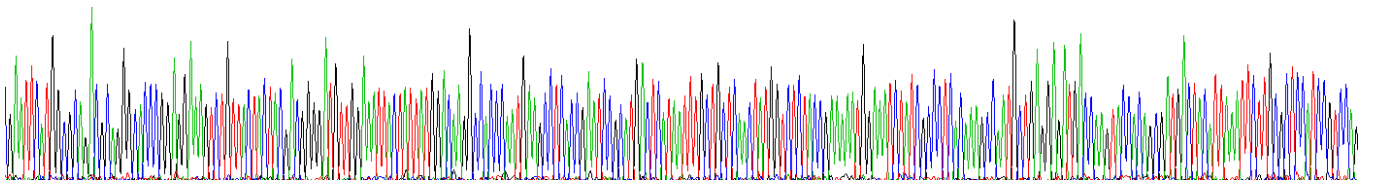
Aliquot and store at -80°C for 12 months.

**Stability Test:** The thermal stability is described by the loss rate. The loss rate was determined by accelerated thermal degradation test, that is, incubate the protein at 37°C for 48h, and no obvious degradation and precipitation were observed. The loss rate is less than 5% within the expiration date under appropriate storage condition.

**[ SEQUENCE ]**

```
MAQTQGTKRK VCYYYDGDVG NYYYGQGHM KPHRIRMTHN LLLNYGLYRK  
MEIYRPHKAN AEEMTKYHSD DYIKFLRSIR PDNMSEYSKQ MQRFNVEDC  
PVFDGLFEFC QLSTGGSVAS AVKLNKQQT D IAVNWAGGLH HAKKSEASGF  
CYVNDIVLAI LELLKYHQRV LYIDIDIHHG DGVEEAFYTT DRVMTVSFHK  
YGEYFPGTGD LRDIGAGK GK YYAVNYPLRD GIDDES YEAI FKPVMSKVME  
MFQPSAVVLQ CGSDSLSGDR LGC FNLTIKG HAKC VEFVKS FNL PMLMLGG  
GGYTIRNVAR CWTYETAVAL DTEIPNELPY NDYFEYFGPD FKLHISPSNM  
TNQNTNEYLE KIKQRLFENL RMLPHAPGVQ MQAIPEDAIP EESGDEDEED  
PDKRISICSS DKRIACEEEF SDSDEEGEGG RKNSSNFKKA KRVKTEDEKE  
KDPEEKKEVT EEEKTKKEKP EAKGVKEEVK LA
```

**[ IDENTIFICATION ]**



**Figure . Gene Sequencing (extract)**

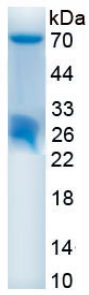


Figure. SDS-PAGE

**[ IMPORTANT NOTE ]**

The kit is designed for research use only, we will not be responsible for any issue if the kit was used in clinical diagnostic or any other procedures.