

RPB285Hu01 10µg

Recombinant Integrin Alpha 6 (ITGa6)

Organism Species: *Homo sapiens (Human)*

Instruction manual

FOR RESEARCH USE ONLY

NOT FOR USE IN CLINICAL DIAGNOSTIC PROCEDURES

12th Edition (Revised in Aug, 2016)

[PROPERTIES]

Source: Prokaryotic expression

Host: *E.coli*

Residues: Phe24~Asn478

Tags: N-terminal His Tag

Subcellular Location: Membrane

Purity: > 97%

Traits: Freeze-dried powder

Buffer formulation: 20mM Tris, 150mM NaCl, pH8.0, containing 0.01% SKL, 5% Trehalose.

Original Concentration: 300µg/mL

Applications: Positive Control; Immunogen; SDS-PAGE; WB.

(May be suitable for use in other assays to be determined by the end user.)

Predicted isoelectric point: 5.2

Predicted Molecular Mass: 54.1kDa

Accurate Molecular Mass: 56kDa as determined by SDS-PAGE reducing conditions.

[USAGE]

Reconstitute in 20mM Tris, 150mM NaCl (pH8.0) to a concentration of 0.1-1.0 mg/mL. Do not vortex.

[STORAGE AND STABILITY]

Storage: Avoid repeated freeze/thaw cycles.

Store at 2-8°C for one month.

Aliquot and store at -80°C for 12 months.

Stability Test: The thermal stability is described by the loss rate. The loss rate was determined by accelerated thermal degradation test, that is, incubate the protein at 37°C for 48h, and no obvious degradation and precipitation were observed. The loss rate is less than 5% within the expiration date under appropriate storage condition.

[SEQUENCE]

```

                                FNLDTRE DNVIRKYGDP GSLFGFSLAM
HWQLQPEDKR LLLVGAPRAE ALPLQRANRT GGLYSCDITA RGPCTRIEFD
NDADPTSESK EDQWMGVTVQ SQGPGGKVVT CAHRYEKRQH VNTKQESRDI
FGRCYVLSQN LRIEDDMDGG DWSFCDGRLR GHEKFGSCQQ GVAATFTKDF
HYIVFGAPGT YNWKGIVRVE QKNNTFFDMN IFEDGPYEVG GETEHDESLV
PVPANSYLGL LFLTSVSYTD PDQFVYKTRP PREQPDTFPD VMMNSYLGFS
LDSGKGIVSK DEITFVSGAP RANHSGAVVL LKRDMKSAHL LPEHIFDGEG
LASSFGYDVA VVDLNKDGWQ DIVIGAPQYF DRDGEVGGAV YVYMNQQGRW
NNVKPIRLNG TKDSMFGIAV KNIGDINQDG YPDIAVGAPY DDLGKVFIIH
GSANGINTKP TQVLKGISPY FGYSIAGN

```

[IDENTIFICATION]

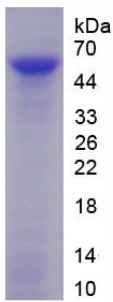


Figure. SDS-PAGE

[IMPORTANT NOTE]

The kit is designed for research use only, we will not be responsible for any issue if the kit was used in clinical diagnostic or any other procedures.