

RPC099Mu01 200µg

Recombinant Integrin Beta 6 (ITGb6)

Organism Species: *Mus musculus* (Mouse)

Instruction manual

FOR RESEARCH USE ONLY

NOT FOR USE IN CLINICAL DIAGNOSTIC PROCEDURES

13th Edition (Revised in Aug, 2023)

[PROPERTIES]

Source: Prokaryotic expression

Host: *E.coli*

Residues: Tyr131~Thr619

Tags: N-terminal His Tag

Subcellular Location: Membrane

Purity: > 80%

Traits: Freeze-dried powder

Buffer formulation: PBS, pH7.4, containing 0.01% SKL, 5% Trehalose .

Original Concentration: 50µg/mL

Applications: Positive Control; Immunogen; SDS-PAGE; WB.

(May be suitable for use in other assays to be determined by the end user.)

Predicted isoelectric point: 4.9

Predicted Molecular Mass: 57.1kDa

Accurate Molecular Mass: 57kDa as determined by SDS-PAGE reducing conditions.

[USAGE]

Reconstitute in ddH₂O to a concentration of 0.1-0.2 mg/mL. Do not vortex.

[STORAGE AND STABILITY]

Storage: Avoid repeated freeze/thaw cycles.

Store at 2-8°C for one month.

Aliquot and store at -80°C for 12 months.

Stability Test: The thermal stability is described by the loss rate. The loss rate was determined by accelerated thermal degradation test, that is, incubate the protein at 37°C for 48h, and no obvious degradation and precipitation were observed. The loss rate is less than 5% within the expiration date under appropriate storage condition.

[SEQUENCE]

```

                                YPVDLYYLM D LSASMDDDLN
TIKELGSRLA KEMSKLTSNF RLGFGSFVEK PVSPFMKTP EEITNPCSSI
PYFCLPTFGF KHILPLTDDA ERFNEIVRKQ KISANIDTPE GGFDAIMQAA
VCKEKIGWRN DSLHLLVFVS DADSHFGMDS KLAGIVIPND GLCHLDHRNE
YSMSTVLEYP TIGQLIDKLV QNNVLLIFAV TQEQVHLYEN YAKLIPGATV
GLLQKDSGNI LQLIISAYEE LRSEVELEVL GDTEGLNLSF TALCNNGVLF
PHQKKCSHMK VGDTASFNVT VSVSNCEKRS RNLIKPVGL GDTLEILVSA
ECDCDCQREI ETNSSKCHNG NGSFQCGVCT CNPGHMGP HC ECGEDMVSTD
SCKESPGHPS CSGRGDCYCG QCICHLSPYG SIYGPYCQCD NFSCLRHKGL
LCGDNGDCDC GECVCRDGTW GEYCNCTTNR DSCTSEDGVL CSGRGDCVCG
KCVCRNPGAS GPTCERCPT
    
```

[IDENTIFICATION]

CGATCGAATCTAAGGAGTAGATCTGTATTAAGCTCATGGAGCTCTCGGCTCTATGGATGAGGAGCTCAACACCATCAAGAGCTTGGCTCGGAGCTGGCCAAAGAGATGTCCAACTAAGCAGCATTAGACTGGGCTTTGGCTCTTTTGGAAAGCCCGTTCTCTTTATGAANCAAGCCGAGGGAATCAGCAAGCT

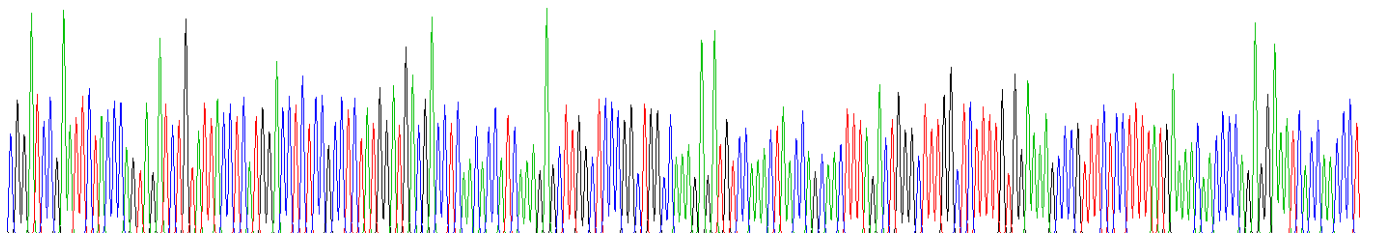


Figure . Gene Sequencing (extract)

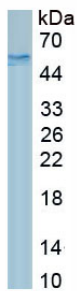


Figure. SDS-PAGE

[IMPORTANT NOTE]

The kit is designed for research use only, we will not be responsible for any issue if the kit was used in clinical diagnostic or any other procedures.