

**RPA548Ca01 100 µg**

**Recombinant Intercellular Adhesion Molecule 1 (ICAM1)**

**Organism Species: *Canis familiaris*; Canine (Dog)**

***Instruction manual***

FOR RESEARCH USE ONLY

NOT FOR USE IN CLINICAL DIAGNOSTIC PROCEDURES

---

13th Edition (Revised in Aug, 2023)

**[ PROPERTIES ]**

**Source:** Prokaryotic expression

**Host:** *E.coli*

**Residues:** Gly25~Pro531

**Tags:** N-terminal His and GST Tag

**Subcellular Location:** Membrane

**Purity:** > 97%

**Traits:** Freeze-dried powder

**Buffer formulation:** PBS, pH7.4, containing 0.01% SKL, 5% Trehalose.

**Original Concentration:** 200µg/mL

**Applications:** Positive Control; Immunogen; SDS-PAGE; WB.

(May be suitable for use in other assays to be determined by the end user.)

**Predicted isoelectric point:** 5.51

**Predicted Molecular Mass:** 85.9kDa

**Accurate Molecular Mass:** 85.9kDa as determined by SDS-PAGE reducing conditions.

**[ USAGE ]**

Reconstitute in 10mM PBS (pH7.4) to a concentration of 0.1-1.0 mg/mL. Do not vortex.

**[ STORAGE AND STABILITY ]**

**Storage:** Avoid repeated freeze/thaw cycles.

Store at 2-8°C for one month.

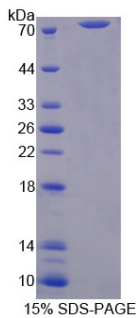
Aliquot and store at -80°C for 12 months.

**Stability Test:** The thermal stability is described by the loss rate. The loss rate was determined by accelerated thermal degradation test, that is, incubate the protein at 37°C for 48h, and no obvious degradation and precipitation were observed. The loss rate is less than 5% within the expiration date under appropriate storage condition.

**[ SEQUENCE ]**

```
GGAQTS VDPAEAIIPR GGSVQVNCST
SCNQTSIFGL ETLTKKELN SGDNWVLFEL TDVQEDSKLI CFSNCHEQTM
APMHLTVYWF PERVELAPLP RWQPVGENTL MTCQVAGGAP RTNLTVVLLR
GEEELSRQPA VGEPAEVTFT VAVGREDHLA NFSCRTDLDL RHRGLGLFQN
SSAPRQLQTF VLPETPPRLA TPPIVEVGTQ WSDCTLDGV FPASEAQVHL
ALAEERLHST VLYKKDSLLA TANVKANPED EGTQQLWCEV TLGDENRRWQ
ENVTFYSFPA PNLTLSEPEV SEWTTVTVEC EAPAGVVVSL SGLPSGLAVP
RAQFQLNASA ADNRRSFSCS AALEVAGHML QKNQTRRELHV LYGPRLDQRD
CPGNWTWEEG SHQTLKCQAW GNPVPELKCH RKGDDALLPI GDLRPVKREV
AGTYLCQARS PRGEITREVV INVIYHQNNI LIIILVTTIV ILGTVSVAAY
LYNRQRKIQK YKLQKAQEAAM AMLNTPATP P
```

**[ IDENTIFICATION ]**



**[ IMPORTANT NOTE ]**

The kit is designed for research use only, we will not be responsible for any issue if the kit was used in clinical diagnostic or any other procedures.