

RPC180Mu01 100µg
Recombinant Interferon Regulatory Factor 2 (IRF2)
Organism Species: *Mus musculus* (Mouse)
Instruction manual

FOR RESEARCH USE ONLY
NOT FOR USE IN CLINICAL DIAGNOSTIC PROCEDURES

13th Edition (Revised in Aug, 2023)

[PROPERTIES]

Source: Prokaryotic expression

Host: *E.coli*

Residues: Met1~Cys349

Tags: N-terminal His Tag

Subcellular Location: Nucleus

Purity: > 80%

Traits: Freeze-dried powder

Buffer formulation: PBS, pH7.4, containing 0.01% SKL, 5% Trehalose .

Original Concentration: 250µg/mL

Applications: Positive Control; Immunogen; SDS-PAGE; WB.

(May be suitable for use in other assays to be determined by the end user.)

Predicted isoelectric point: 8.2

Predicted Molecular Mass: 43.1kDa

Accurate Molecular Mass: 44&45kDa as determined by SDS-PAGE reducing conditions.

[USAGE]

Reconstitute in ddH₂O to a concentration of 0.1-0.5 mg/mL. Do not vortex.

[STORAGE AND STABILITY]

Storage: Avoid repeated freeze/thaw cycles.

Store at 2-8°C for one month.

Aliquot and store at -80°C for 12 months.

Stability Test: The thermal stability is described by the loss rate. The loss rate was determined by accelerated thermal degradation test, that is, incubate the protein at 37°C for 48h, and no obvious degradation and precipitation were observed. The loss rate is less than 5% within the expiration date under appropriate storage condition.

[SEQUENCE]

```

MPVERMRMRP WLEEQINSNT IPGLKWLNKE KKIFQIPWMH AARHGWDVEK
DAPLFRNWAI HTGKHQPGID KPDPKTWKAN FRCAMNSLPD IEEVKDRSIK
KGNNAFRVYR MLPLSERPSK KGKKPKTEKE ERVKHIKQEP VESSLGLSNG
VSGFSPEYAV LTSAIKNEVD STVNIIVVGQ SHLDSNIEDQ EIVTNPPDIC
QVVEVTTESD DQPVSMSELY PLQISPVSYS AESETTDSVA SDEENAEGRP
HWRKRSIEGK QYLSNMGTRN TYLLPSMATF VTSNKPDQV TIKEDSCPMP
YNSSWPPFTD LPLPAPVTPT PSSSRPDRET RASVIKKTSD ITQARVKSC
  
```

[IDENTIFICATION]

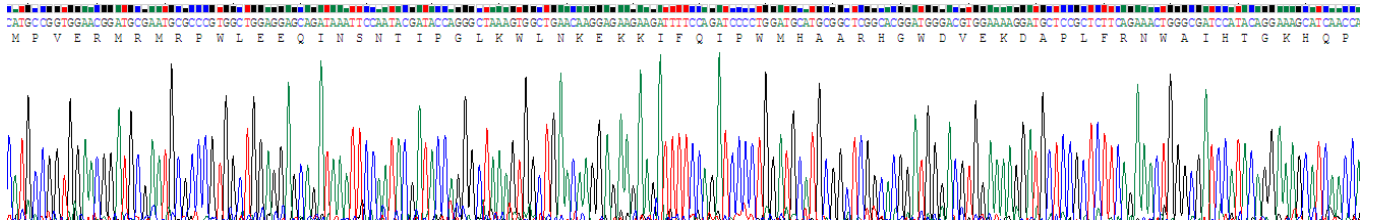


Figure. Gene Sequencing (Extract)

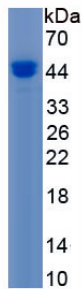


Figure. SDS-PAGE

[IMPORTANT NOTE]

The kit is designed for research use only, we will not be responsible for any issue if the kit was used in clinical diagnostic or any other procedures.