

RPA065Hu01 100ug

Recombinant Interleukin 1 Receptor Type II (IL1R2)

Organism Species: *Homo sapiens (Human)*

Instruction manual

FOR RESEARCH USE ONLY

NOT FOR USE IN CLINICAL DIAGNOSTIC PROCEDURES

13th Edition (Revised in Aug, 2023)

[**PROPERTIES**]

Source: Prokaryotic expression

Host: *E.coli*

Residues: Phe14~Ala355

Tags: N-terminal His and GST Tag

Subcellular Location: Membrane, Secreted

Purity: > 90%

Traits: Freeze-dried powder

Buffer formulation: PBS, pH7.4, containing 0.01% SKL, 5% Trehalose.

Original Concentration: 200µg/mL

Applications: Positive Control; Immunogen; SDS-PAGE; WB.

(May be suitable for use in other assays to be determined by the end user.)

Predicted isoelectric point: 6.4

Predicted Molecular Mass: 69kDa

Accurate Molecular Mass: 69kDa as determined by SDS-PAGE reducing conditions.

[**USAGE**]

Reconstitute in 10mM PBS (pH7.4) to a concentration of 0.1-1.0 mg/mL. Do not vortex.

[**STORAGE AND STABILITY**]

Storage: Avoid repeated freeze/thaw cycles.

Store at 2-8°C for one month.

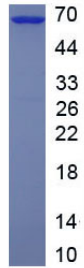
Aliquot and store at -80°C for 12 months.

Stability Test: The thermal stability is described by the loss rate. The loss rate was determined by accelerated thermal degradation test, that is, incubate the protein at 37°C for 48h, and no obvious degradation and precipitation were observed. The loss rate is less than 5% within the expiration date under appropriate storage condition.

[**SEQUENCE**]

```
FTLQPAA HTGAARSCRFRGRHYKREFRLEGEFVALRC PQVPYWLWAS VSPRINLTWH KNDSARTVPG EEETRMWAQD GALWLLPALQ EDSGTYVCTT RNASYCDKMS IELRVFENTD AFLPFISYPQ  
ILTLSTSGVL VCPDLSEFTRDKTDVKIQWY KDSLLLDKDN EKFLSVRGTT HLLVHDVALE DAGYYRCVLT FAHEGQQYNI TRSIELRIKK KKEETIPVII SPLKTISASL GSRLTIPCKV  
FLGTGTLPTL MLWWTANDTH IESAYPGGRV TEGPRQEYSE NNENYIEVPL IFDPVTREDL HMDFKCVVHN TLSFQTLRTT VKEASSTFSW GIVLA
```

[IDENTIFICATION]



[IMPORTANT NOTE]

The kit is designed for research use only, we will not be responsible for any issue if the kit was used in clinical diagnostic or any other procedures.