

**RPA061Ca01 50µg**

**Recombinant Interleukin 15 (IL15)**

**Organism Species: *Canis familiaris*; Canine (Dog)**

***Instruction manual***

FOR RESEARCH USE ONLY

NOT FOR USE IN CLINICAL DIAGNOSTIC PROCEDURES

---

13th Edition (Revised in Aug, 2023)

**[ PROPERTIES ]**

**Source:** Prokaryotic expression

**Host:** *E.coli*

**Residues:** Val22~Ser134

**Tags:** Two N-terminal Tags, His-tag and SUMO-tag

**Subcellular Location:** Secreted

**Purity:** > 95%

**Traits:** Freeze-dried powder

**Buffer formulation:** PBS, pH7.4, containing 0.01% SKL, 5% Trehalose .

**Original Concentration:** 1200µg/mL

**Applications:** Positive Control; Immunogen; SDS-PAGE; WB.

(May be suitable for use in other assays to be determined by the end user.)

**Predicted isoelectric point:** 7.6

**Predicted Molecular Mass:** 26.8kDa

**Accurate Molecular Mass:** 27kDa as determined by SDS-PAGE reducing conditions.

**[ USAGE ]**

Reconstitute in 10mM PBS (pH7.4) to a concentration of 0.1-1.0 mg/mL. Do not vortex.

**[ STORAGE AND STABILITY ]**

**Storage:** Avoid repeated freeze/thaw cycles.

Store at 2-8°C for one month.

Aliquot and store at -80°C for 12 months.

**Stability Test:** The thermal stability is described by the loss rate. The loss rate was determined by accelerated thermal degradation test, that is, incubate the protein at 37°C for 48h, and no obvious degradation and precipitation were observed. The loss rate is less than 5% within the expiration date under appropriate storage condition.

**[ SEQUENCE ]**

VENPMNRLVAETLTLSTHRTWLI<sup>1</sup>GDGNLMIPTPENKNHQLCIKEVFGIDTLKNQTAHG<sup>2</sup>EAVDKL<sup>3</sup>FQNL<sup>4</sup>SLIKEHIERQKKRCAG<sup>5</sup>ERWR  
VTKFLDY<sup>6</sup>LQVFLGVINTEWTPES

**[ IDENTIFICATION ]**

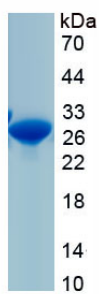


Figure. SDS-PAGE

**[ IMPORTANT NOTE ]**

The kit is designed for research use only, we will not be responsible for any issue if the kit was used in clinical diagnostic or any other procedures.