



**RPD348Ra01 100µg**  
**Recombinant Interleukin 17 Receptor E (IL17RE)**  
**Organism Species: Rattus norvegicus (Rat)**  
***Instruction manual***

FOR IN VITRO USE AND RESEARCH USE ONLY  
NOT FOR USE IN CLINICAL DIAGNOSTIC PROCEDURES

---

---

12th Edition (Revised in Aug, 2016)

## **[ PROPERTIES ]**

**Source:** Prokaryotic expression.

**Host:** *E. coli*

**Residues:** Asp457~Gly626

**Tags:** N-terminal His-Tag

**Tissue Specificity:** Lung, Brain, Kidney, Liver.

**Subcellular Location:** Cell membrane; Single-pass type I membrane protein.

**Purity:** >95%

**Traits:** Freeze-dried powder

**Buffer formulation:** 10mM PBS, pH7.4, containing 1mM DTT, 5% trehalose and 0.01% sarcosyl.

**Original Concentration:** 200µg/mL

**Applications:** Positive Control; Immunogen; SDS-PAGE; WB.

(May be suitable for use in other assays to be determined by the end user.)

**Predicted isoelectric point:** 8.9

**Predicted Molecular Mass:** 19.9kDa

**Accurate Molecular Mass:** 20kDa as determined by SDS-PAGE reducing conditions.

## **[ USAGE ]**

Reconstitute in 10mM PBS (pH7.4) to a concentration of 0.1-1.0 mg/mL. Do not vortex.

## **[ STORAGE AND STABILITY ]**

**Storage:** Avoid repeated freeze/thaw cycles.

Store at 2-8°C for one month.

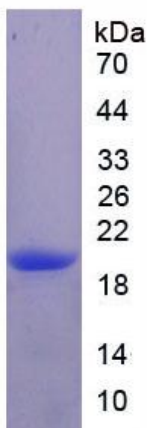
Aliquot and store at -80°C for 12 months.

**Stability Test:** The thermal stability is described by the loss rate. The loss rate was determined by accelerated thermal degradation test, that is, incubate the protein at 37°C for 48h, and no obvious degradation and precipitation were observed. The loss rate is less than 5% within the expiration date under appropriate storage condition.

**[ SEQUENCE ]**

DSEA QRRLVGALAE LLRTALGGGR DVIVDLWEGT HVARIGPLPW  
LWAARERVAR EQGTVLLLWS CAGPSTACSG DPQTASLRTL SCAAPRQLLL  
AYFSRLCAKG DIPGPLRALP RYRLLRDLP LRLALDARPA TLATSWSHLG  
AKECLKSRLE LCHLLELEAA KDDYHG

**[ IDENTIFICATION ]**



**Figure 1. SDS-PAGE**