

RPX262Mu01 100µg

Recombinant Interleukin 23 (IL23)

Organism Species: *Mus musculus* (Mouse)

Instruction manual

FOR RESEARCH USE ONLY

NOT FOR USE IN CLINICAL DIAGNOSTIC PROCEDURES

13th Edition (Revised in Aug, 2023)

[PROPERTIES]

Source: Prokaryotic expression

Host: *E.coli*

Residues: Met23~Ser335+IGSGSSRGGSGSGGGGGSK+Leu20~Ala196

Tags: N-terminal His Tag

Subcellular Location: Secreted

Purity: > 80%

Traits: Freeze-dried powder

Buffer formulation: PBS, pH7.4, containing 0.01% SKL, 5% Trehalose .

Original Concentration: 200µg/mL

Applications: Positive Control; Immunogen; SDS-PAGE; WB.

(May be suitable for use in other assays to be determined by the end user.)

Predicted isoelectric point: 6.5

Predicted Molecular Mass: 60.9kDa

Accurate Molecular Mass: 65kDa as determined by SDS-PAGE reducing conditions.

Phenomenon explanation:

The possible reasons that the actual band size differs from the predicted are as follows:

1. Splice variants: Alternative splicing may create different sized proteins from the same gene.
2. Relative charge: The composition of amino acids may affects the charge of the protein.
3. Post-translational modification: Phosphorylation, glycosylation, methylation etc.
4. Post-translation cleavage: Many proteins are synthesized as pro-proteins, and then cleaved to give the active form.
5. Polymerization of the target protein: Dimerization, multimerization etc.

[USAGE]

Reconstitute in 10mM PBS (pH7.4) to a concentration of 0.1-1.0 mg/mL. Do not vortex.

[STORAGE AND STABILITY]

Storage: Avoid repeated freeze/thaw cycles.

Store at 2-8°C for one month.

Aliquot and store at -80°C for 12 months.

Stability Test: The thermal stability is described by the loss rate. The loss rate was determined by accelerated thermal degradation test, that is, incubate the protein at 37°C for 48h, and no obvious degradation and precipitation were observed. The loss rate is less than 5% within the expiration date under appropriate storage condition.

[SEQUENCE]

```

MWELEKDV YVVEVDWTPD APGETVNLTC
DTPEEDDITW TSDQRHGVIG SGKTLTITVK EFLDAGQYTC HKGGETLSHS
HLLLHKKENG IWSTEILKNF KNKTFKCEA PNYSGRFTCS WLVRNMDLK
FNIKSSSSSP DSRAVTCGMA SLSAEKVTLD QRDYEKYSVS CQEDVTCPTA
EETLPIELAL EARQQNKYEN YSTSFFIRDI IKPDPPKNLQ MKPLKNSQVE
VSWEYPDSWS TPHYFSLKF FVRIQRKKEK MKETEEGCNQ KGAFLEKTS
TEVQCKGGNV CVQAQDRYYN SSCSKWACVP CRVRS
IGSGSSRGGSGSGGGGGGSK

L AVPRSSSPDW AQCQQLSRNL CMLAWNAHAP
AGHMNLLREE EDEETKNNVP RIQCEDGCDP QGLKDNSQFC LQRIRQGLAF
YKHLLDSDIF KGEPALLPDS PMEQLHTSLL GLSQLLPED HPRETQMPS
LSSSQWQRP LLRSKILRSL QAFLAIAARV FAHGAATLTE PLVPTA

```

[IDENTIFICATION]

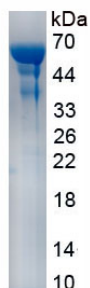


Figure. SDS-PAGE

[IMPORTANT NOTE]

The kit is designed for research use only, we will not be responsible for any issue if the kit was used in clinical diagnostic or any other procedures.