

**RPL648Hu01 50µg**

**Recombinant Kelch Like ECH Associated Protein 1 (KEAP1)**

**Organism Species: *Homo sapiens (Human)***

***Instruction manual***

FOR RESEARCH USE ONLY

NOT FOR USE IN CLINICAL DIAGNOSTIC PROCEDURES

---

13th Edition (Revised in Aug, 2023)

**[ PROPERTIES ]**

**Source:** Prokaryotic expression

**Host:** *E.coli*

**Residues:** Leu327~Cys624

**Tags:** N-terminal His Tag

**Subcellular Location:** Nucleus, Cytoplasm

**Purity:** > 90%

**Traits:** Freeze-dried powder

**Buffer formulation:** PBS, pH7.4, containing 0.01% SKL, 5% Trehalose .

**Original Concentration:** 80µg/mL

**Applications:** Positive Control; Immunogen; SDS-PAGE; WB.

(May be suitable for use in other assays to be determined by the end user.)

**Predicted isoelectric point:** 5.7

**Predicted Molecular Mass:** 36.5kDa

**Accurate Molecular Mass:** 37kDa as determined by SDS-PAGE reducing conditions.

**[ USAGE ]**

Reconstitute in ddH<sub>2</sub>O to a concentration of 0.1-0.5 mg/mL. Do not vortex.

**[ STORAGE AND STABILITY ]**

**Storage:** Avoid repeated freeze/thaw cycles.

Store at 2-8°C for one month.

Aliquot and store at -80°C for 12 months.

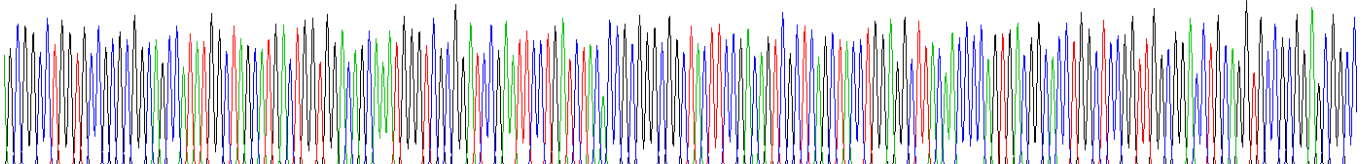
**Stability Test:** The thermal stability is described by the loss rate. The loss rate was determined by accelerated thermal degradation test, that is, incubate the protein at 37°C for 48h, and no obvious degradation and precipitation were observed. The loss rate is less than 5% within the expiration date under appropriate storage condition.

**[ SEQUENCE ]**

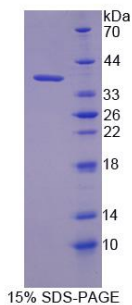
LIYT AGGYFRQSLS YLEAYNPSDG  
 TWLRLADLQV PRSGLAGCVV GLLLYAVGGR NNSPDGNTDS SALDCYNPMT  
 NQWSPCAPMS VPRNRIGVGV IDGHIYAVGG SHGCIHHNSV ERYEPERDEW  
 HLVAPMLTRR IGVGVAVLNR LLYAVGGFDG TNRLNSAECY YPERNEWMI  
 TAMNTIRSGA GVCVLHNCIY AAGGYDGQDQ LNSVERYDVE TETWTFVAPM  
 KHRRSALGIT VHQGRIYVLG GYDGHTFLDS VECYDPD TDT WSEVTRMTSG  
 RSGVGVAVTM EPCRKQIDQQ NCTC

**[ IDENTIFICATION ]**

ATGGCTGGTGGCCGCGGGGACCAATATGGCTAGCATGACTGGTGGACAGCAAAATGGGTGCGGATCCGAATTCCTGATCTACACCGCGGGGGCTACTTCCGACAGTGGCTAGCTACCTGGAGGCTTACACCCAGTACCGGCACTGGCTCCGGTTGGGGACTGCAGGTGCCCGGAGCGGCG



**Figure. Gene Sequencing (Extract)**



**[ IMPORTANT NOTE ]**

The kit is designed for research use only, we will not be responsible for any issue if the kit was used in clinical diagnostic or any other procedures.