

RPS214Mu01 100µg

Recombinant Keratin 28 (KRT28)

Organism Species: *Mus musculus* (Mouse)

Instruction manual

FOR RESEARCH USE ONLY

NOT FOR USE IN CLINICAL DIAGNOSTIC PROCEDURES

12th Edition (Revised in Aug, 2016)

[PROPERTIES]

Source: Prokaryotic expression

Host: *E.coli*

Residues: Met1~Phe462

Tags: N-terminal His and GST Tag

Subcellular Location: Cytoplasm

Purity: > 95%

Traits: Freeze-dried powder

Buffer formulation: 20mM Tris, 150mM NaCl, pH8.0, containing 0.01% SKL, 5% Trehalose.

Original Concentration: 200µg/mL

Applications: Positive Control; Immunogen; SDS-PAGE; WB.

(May be suitable for use in other assays to be determined by the end user.)

Predicted isoelectric point: 5.0

Predicted Molecular Mass: 80.3kDa

Accurate Molecular Mass: 80kDa as determined by SDS-PAGE reducing conditions.

[USAGE]

Reconstitute in 20mM Tris, 150mM NaCl (pH8.0) to a concentration of 0.1-1.0 mg/mL. Do not vortex.

[STORAGE AND STABILITY]

Storage: Avoid repeated freeze/thaw cycles.

Store at 2-8°C for one month.

Aliquot and store at -80°C for 12 months.

Stability Test: The thermal stability is described by the loss rate. The loss rate was determined by accelerated thermal degradation test, that is, incubate the protein at 37°C for 48h, and no obvious degradation and precipitation were observed. The loss rate is less than 5% within the expiration date under appropriate storage condition.

[SEQUENCE]

```

MSLRFSGGSR  HVGIQSGSLR  PPSGGAGFAG  SSVAGGSVAG  SGFSWALGGT
LGSAPGGSHA  TGALGNVSGV  CFGISEGGLL  SGNEKVTMQN  LNNRLASYLD
NVKALEEANS  ELERKIKTWH  EKYGPGSCRG  LDRDYSKYHL  TIEDLKSKII
SSTAANANII  LQIDNARLAA  DDFRLKYENE  LTLHQNVEAD  INGLRRVLDE
LTLCRTDQEL  QYESLSEEMT  YLKKNHEEEM  KVLQCAAGGN  VNVEMNAAPG
VDLTVLLNM  RAEYEALAEQ  NRRDAEAWFQ  EKSATLQQQI  SNDLGAATSA
RTELTELKRS  LQTLEIELQS  LSATKHSLEC  SLAETEGNYC  SQLAQIQAQI
SALEEQLHQV  RTETEGQKLE  HEQLLDIKAH  LEKEIETYCR  LIDGDENSCS
VSKGFESGTS  GNSPKDVSKT  TLVKTVEEII  DQRGKVLSSR  IHSIEEKMSK
MSGKAEQRV  PF
  
```

[IDENTIFICATION]

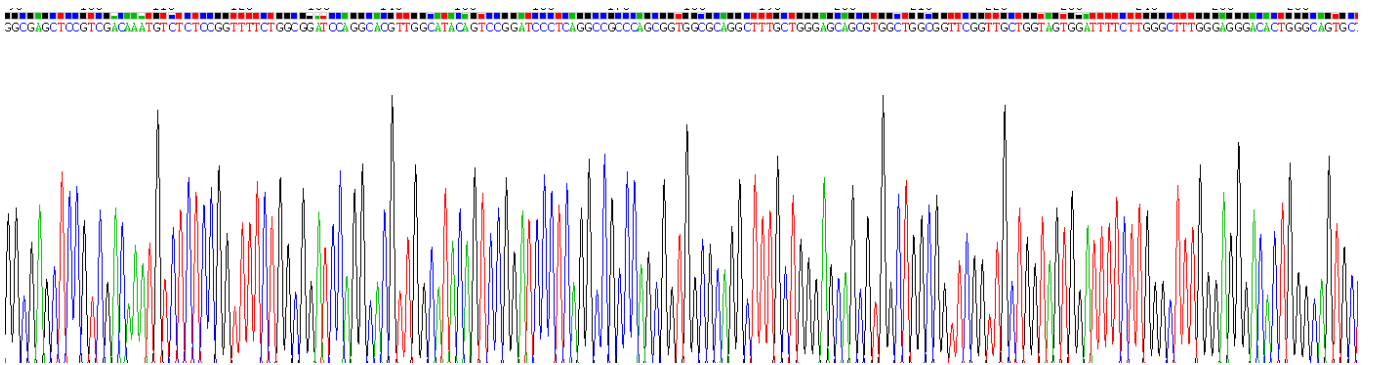
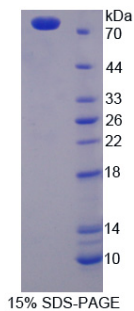


Figure . Gene Sequencing (extract)



[IMPORTANT NOTE]

The kit is designed for research use only, we will not be responsible for any issue if the kit was used in clinical diagnostic or any other procedures.