

RPD715Hu01 200ug
Recombinant Killer Cell Immunoglobulin Like Receptor 2DL2 (KIR2DL2)
Organism Species: *Homo sapiens (Human)*
Instruction manual

FOR RESEARCH USE ONLY
NOT FOR USE IN CLINICAL DIAGNOSTIC PROCEDURES

12th Edition (Revised in Aug, 2016)

[PROPERTIES]

Source: Prokaryotic expression

Host: *E.coli*

Residues: His22~Glu339

Tags: N-terminal His and GST Tag

Subcellular Location: Membrane, Chromosome

Purity: > 90%

Traits: Freeze-dried powder

Buffer formulation: PBS, pH7.4, containing 0.01% SKL, 5% Trehalose.

Original Concentration: 50µg/mL

Applications: Positive Control; Immunogen; SDS-PAGE; WB.

(May be suitable for use in other assays to be determined by the end user.)

Predicted isoelectric point: 6.6

Predicted Molecular Mass: 67.9kDa

Accurate Molecular Mass: 75kDa as determined by SDS-PAGE reducing conditions.

Phenomenon explanation:

The possible reasons that the actual band size differs from the predicted are as follows:

1. Splice variants: Alternative splicing may create different sized proteins from the same gene.
2. Relative charge: The composition of amino acids may affect the charge of the protein.
3. Post-translational modification: Phosphorylation, glycosylation, methylation etc.
4. Post-translation cleavage: Many proteins are synthesized as pro-proteins, and then cleaved to give the active form.
5. Polymerization of the target protein: Dimerization, multimerization etc.

[USAGE]

Reconstitute in ddH₂O to a concentration of 0.1-0.5 mg/mL. Do not vortex.

[STORAGE AND STABILITY]

Storage: Avoid repeated freeze/thaw cycles.

Store at 2-8°C for one month.

Aliquot and store at -80°C for 12 months.

Stability Test: The thermal stability is described by the loss rate. The loss rate was determined by accelerated thermal degradation test, that is, incubate the protein at 37°C for 48h, and no obvious degradation and precipitation were observed. The loss rate is less than 5% within the expiration date under appropriate storage condition.

[SEQUENCE]

```

                HEGVHRKPS  LLAHPGRLVK  SEETVILQCW
SDVRFEHFLL  HREGKFKDTL  HLI GEHHDGV  SKANFSIGPM  MQDLAGTYRC
YGSVTHSPYQ  LSAPSDPLDI  VITGLYEKPS  LSAQPGPTVL  AGESVTLSCS
SRSSYDMYHL  SREGEAHECR  FSAGPKVNGT  FQADFPLGPA  THGGTYRCFG
SFRDSPYEWS  NSSDPLLVSV  IGNPSNSWPS  PTEPSSKTGN  PRHLHILIGT
SVVIILFILL  FLLHRWCSN  KKNAAVMDQE  SAGNRTANSE  DSDEQDPQEV
TYTQLNHCVF  TQRKITRPSQ  RPKTPPTDII  VY AELPNAE
    
```

[IDENTIFICATION]

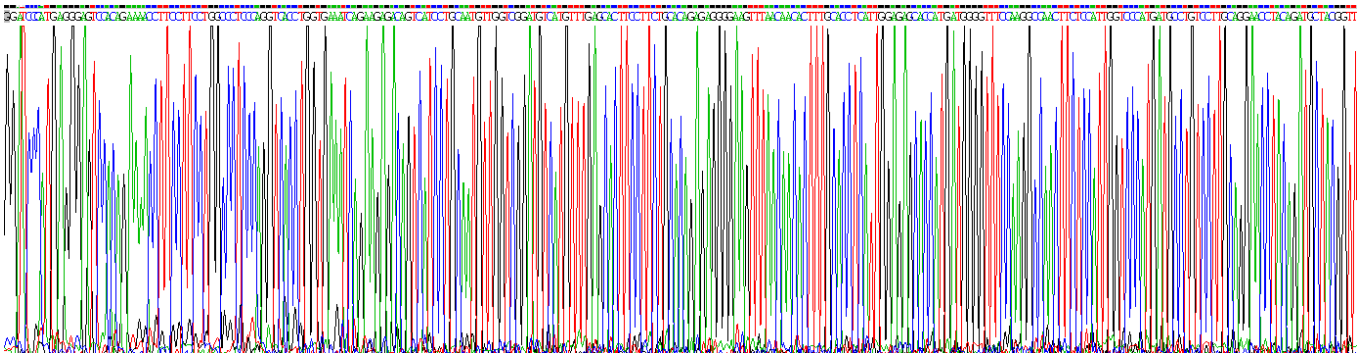
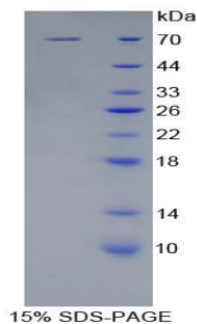


Figure . Gene Sequencing (extract)



[IMPORTANT NOTE]

The kit is designed for research use only, we will not be responsible for any issue if the kit was used in clinical diagnostic or any other procedures.