

RPH757Mu02 50µg

Recombinant Klotho (KL)

Organism Species: *Mus musculus* (Mouse)

Instruction manual

FOR RESEARCH USE ONLY

NOT FOR USE IN CLINICAL DIAGNOSTIC PROCEDURES

13th Edition (Revised in Aug, 2023)

[PROPERTIES]

Source: Prokaryotic expression

Host: *E.coli*

Residues: Leu59~Phe508

Tags: N-terminal His Tag

Subcellular Location: Membrane, Secreted

Purity: > 90%

Traits: Freeze-dried powder

Buffer formulation: PBS, pH7.4, containing 0.01% SKL, 5% Trehalose .

Original Concentration: 400µg/mL

Applications: Positive Control; Immunogen; SDS-PAGE; WB.

(May be suitable for use in other assays to be determined by the end user.)

Predicted isoelectric point: 8.3

Predicted Molecular Mass: 52.7kDa

Accurate Molecular Mass: 53kDa as determined by SDS-PAGE reducing conditions.

[USAGE]

Reconstitute in 10mM PBS (pH7.4) to a concentration of 0.1-1.0 mg/mL. Do not vortex.

[STORAGE AND STABILITY]

Storage: Avoid repeated freeze/thaw cycles.

Store at 2-8°C for one month.

Aliquot and store at -80°C for 12 months.

Stability Test: The thermal stability is described by the loss rate. The loss rate was determined by accelerated thermal degradation test, that is, incubate the protein at 37°C for 48h, and no obvious degradation and precipitation were observed. The loss rate is less than 5% within the expiration date under appropriate storage condition.

[SEQUENCE]

LH DTFPDGFLWA VGSAAYQTEG GWRQHGKGAS IWDTFTHHSG
 AAPSDSPIVV APSGAPSPPL SSTGDVASDS YNNVYRDTEG LRELGVTHYR
 FSISWARVLP NGTAGTPNRE GLRYRRLLE RLRELGVQPV VTLYHWDLPQ
 RLQDTYGGWA NRALADHFRD YAELCFRHFQ GQVKYWITID NPYVVAWHGY
 ATGRLAPGVR GSSRLGYLVA HNLLLAHAKV WHLYNTSFRP TQGGRVSIAL
 SSHWINPRRM TDYNIRECQK SLDFVLGWFA KPIFIDGDYP ESMKNNLSSL
 LPDFTESEKR LIRGTADFFA LSFQPTLSFQ LLDPNMKFRQ LESPCLRQLL
 SWIDLEYNHP PIFIVENGWF VSGTTKRDDA KYMYLKKFI METLKAIRLD
 GVDVIGYTAW SLMDGFWEHR GYSIRRGFLY VDFLSQDKEL LPKSSALFYQ
 KLIEDNGF

[IDENTIFICATION]

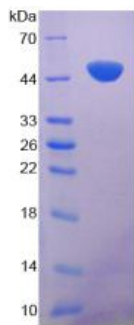


Figure. SDS-PAGE

[IMPORTANT NOTE]

The kit is designed for research use only, we will not be responsible for any issue if the kit was used in clinical diagnostic or any other procedures.