

RPB370Po01 1

Recombinant Lactate Dehydrogenase A (LDHA)

Organism Species: *Sus scrofa*; *Porcine (Pig)*

Instruction manual

FOR RESEARCH USE ONLY

NOT FOR USE IN CLINICAL DIAGNOSTIC PROCEDURES

13th Edition (Revised in Aug, 2023)

[PROPERTIES]

Source: Prokaryotic expression

Host: *E.coli*

Residues: Met1~Phe332

Tags: N-terminal His and GST Tag

Subcellular Location: Cytoplasm

Purity: > 90%

Traits: Freeze-dried powder

Buffer formulation: PBS, pH7.4, containing 0.01% SKL, 5% Trehalose.

Original Concentration: 100µg

Applications: Positive Control; Immunogen; SDS-PAGE; WB.

(May be suitable for use in other assays to be determined by the end user.)

Predicted isoelectric point: 8.2

Predicted Molecular Mass: 66.6kDa

Accurate Molecular Mass: 67kDa as determined by SDS-PAGE reducing conditions.

[USAGE]

Reconstitute in 10mM PBS (pH7.4) to a concentration of 0.1-1.0 mg/mL. Do not vortex.

[STORAGE AND STABILITY]

Storage: Avoid repeated freeze/thaw cycles.

Store at 2-8°C for one month.

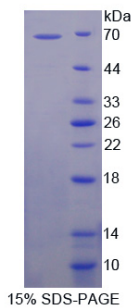
Aliquot and store at -80°C for 12 months.

Stability Test: The thermal stability is described by the loss rate. The loss rate was determined by accelerated thermal degradation test, that is, incubate the protein at 37°C for 48h, and no obvious degradation and precipitation were observed. The loss rate is less than 5% within the expiration date under appropriate storage condition.

[SEQUENCE]

MATLKDQLIH NLLKEEHVPH NKITVVGVGA VGMACAISIL MKELADEIAL
VDVMEDKLGK EMMDLQHGSL FLRTPKIVSG KDYNVTANSR LVVITAGARQ
QEGESRLNLV QRNVNIFKFI IPNIVKYSNP CKLLVVSNPV DILTYVAWKI
SGFPKNRVIG SGCNLD SARF RYLMGERLGW HPLSCHGWIL GEHGDSSVPV
WSGVNVAGVS LKNLHPELGT DADKEHWKAV HKQVVD SAYE VIKLKG YTSW
AIGLSVADLA ESIMKNLRRV HPISTMIKGL YGIKEDVFLS VPCILGQNGI
SDVVKVTLTP EEEAHLK KSA DTLWGIQKEL QF

[IDENTIFICATION]



[IMPORTANT NOTE]

The kit is designed for research use only, we will not be responsible for any issue if the kit was used in clinical diagnostic or any other procedures.