

**RPC080Hu01 10µg**

**Recombinant Laminin Beta 2 (LAMb2)**

**Organism Species: *Homo sapiens* (Human)**

***Instruction manual***

FOR RESEARCH USE ONLY

NOT FOR USE IN CLINICAL DIAGNOSTIC PROCEDURES

---

13th Edition (Revised in Aug, 2023)

**[ PROPERTIES ]**

**Source:** Prokaryotic expression

**Host:** *E.coli*

**Residues:** Asp38~His350

**Tags:** N-terminal His and GST Tag

**Subcellular Location:** Secreted

**Purity:** > 90%

**Traits:** Freeze-dried powder

**Buffer formulation:** PBS, pH7.4, containing 0.01% SKL, 5% Trehalose .

**Original Concentration:** 50µg/mL

**Applications:** Positive Control; Immunogen; SDS-PAGE; WB.

(May be suitable for use in other assays to be determined by the end user.)

**Predicted isoelectric point:** 6.6

**Predicted Molecular Mass:** 65.5kDa

**Accurate Molecular Mass:** 66kDa as determined by SDS-PAGE reducing conditions.

**[ USAGE ]**

Reconstitute in ddH<sub>2</sub>O to a concentration of 0.1-0.2 mg/mL. Do not vortex.

**[ STORAGE AND STABILITY ]**

**Storage:** Avoid repeated freeze/thaw cycles.

Store at 2-8°C for one month.

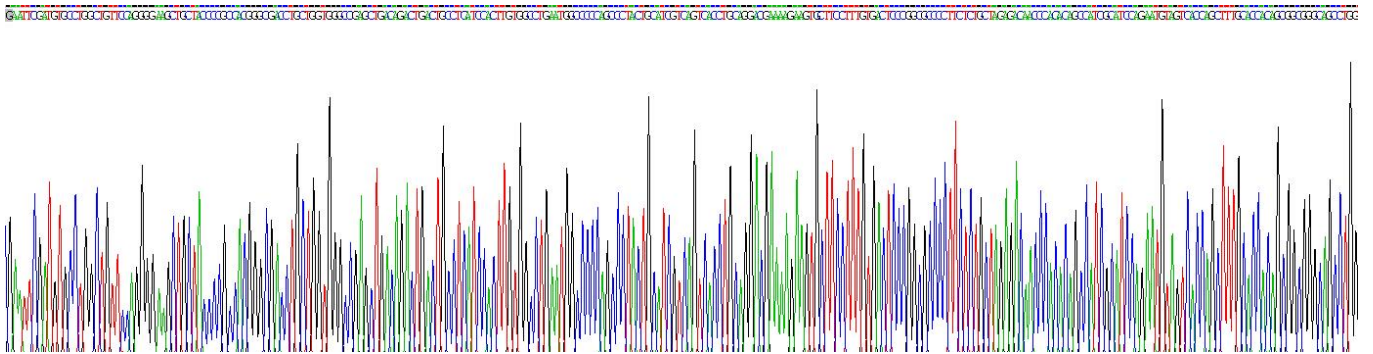
Aliquot and store at -80°C for 12 months.

**Stability Test:** The thermal stability is described by the loss rate. The loss rate was determined by accelerated thermal degradation test, that is, incubate the protein at 37°C for 48h, and no obvious degradation and precipitation were observed. The loss rate is less than 5% within the expiration date under appropriate storage condition.

**[ SEQUENCE ]**

DVP GCSRGSCYPA  
 TGDLLVGRAD RLTAASSTCGL NGPQPYCIVS HLQDEKKCFL CDSRRPFSAR  
 DNPHSHRIQN VVTSFAPQRR AAWWQSENGI PAVTIQLDLE AEFHFTHLIM  
 TFKTFRPAAM LVERSADFGR TWHVYRYFSY DCGADFPQVP LAPPRHWDDV  
 VCESRYSEIE PSTEGEVIYR VLDPAIPIPD PYSSRIQNLL KITNLRVNL  
 RLHTLGDNLL DPRREIREKY YYALYELVVR GNCFCYGHAS ECAPAPGAPA  
 HAEGMVHGAC ICKHNTRGLN CEQCQDFYRD LPWRPAEDGH SHACRKCECH

**[ IDENTIFICATION ]**



**Figure . Gene Sequencing (extract)**

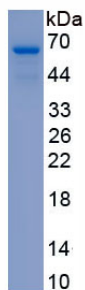


Figure. SDS-PAGE

**[ IMPORTANT NOTE ]**

The kit is designed for research use only, we will not be responsible for any issue if the kit was used in clinical diagnostic or any other procedures.