

**RPB766Hu01 200µg**

**Recombinant Lectin Galactoside Binding, Soluble 3 Binding Protein (LGALS3BP)**

**Organism Species: *Homo sapiens (Human)***

***Instruction manual***

FOR RESEARCH USE ONLY

NOT FOR USE IN CLINICAL DIAGNOSTIC PROCEDURES

---

13th Edition (Revised in Aug, 2023)

**[ PROPERTIES ]**

**Source:** Prokaryotic expression

**Host:** *E.coli*

**Residues:** Met24~Leu221

**Tags:** N-terminal His Tag

**Subcellular Location:** Secreted, Extracellular matrix

**Purity:** > 97%

**Traits:** Freeze-dried powder

**Buffer formulation:** PBS, pH7.4, containing 0.01% SKL, 5% Trehalose .

**Original Concentration:** 800µg/mL

**Applications:** Positive Control; Immunogen; SDS-PAGE; WB.

(May be suitable for use in other assays to be determined by the end user.)

**Predicted isoelectric point:** 4.8

**Predicted Molecular Mass:** 25.3kDa

**Accurate Molecular Mass:** 25kDa as determined by SDS-PAGE reducing conditions.

**[ USAGE ]**

Reconstitute in 10mM PBS (pH7.4) to a concentration of 0.1-1.0 mg/mL. Do not vortex.

**[ STORAGE AND STABILITY ]**

**Storage:** Avoid repeated freeze/thaw cycles.

Store at 2-8°C for one month.

Aliquot and store at -80°C for 12 months.

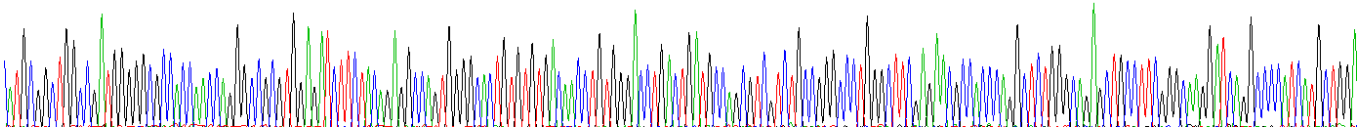
**Stability Test:** The thermal stability is described by the loss rate. The loss rate was determined by accelerated thermal degradation test, that is, incubate the protein at 37°C for 48h, and no obvious degradation and precipitation were observed. The loss rate is less than 5% within the expiration date under appropriate storage condition.

**[ SEQUENCE ]**

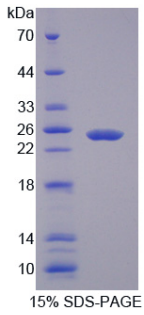
MRLADGG ATNQGRVEIF YRGQWGTVCD  
 NLWDLTDASV VCRALGFENA TQALGRAAFG QGSGPIMLDE VQCTGTEASL  
 ADCKSLGWLK SNCRHERDAG VVCTNETRST HTLDLSRELS EALGQIFDSQ  
 RGCDSLISVN VQGEDALGFC GHTVILTANL EAQALWKEPG SNVTMSVDAE  
 CVPMMVRDLLR YFYSTRRIDIT L

**[ IDENTIFICATION ]**

ATGCGCTGCGGATGGGCGCCACCAAGGCGCGCTGGAGATCTTTCAGAGGCCAGTGGGCACTGTGTGTGACACCTGTGGGACCTGACTGATGCCAGGCTGCTCTGCGGGCCCTGGGCTTCGAGAGCGCCCGCAGGCTCTGGGCAAGCTGCTTGGGCAAGGATCAGGCGCCATCATGCTGGA  
 H R L A D G C A T N Q G R V E I F Y R G Q W G T V C D N L W D L T D A S V V C R A L G F E N A T Q A L G R A A F G Q G S G P I M L D



**Figure. Gene Sequencing (Extract)**



**[ IMPORTANT NOTE ]**

The kit is designed for research use only, we will not be responsible for any issue if the kit was used in clinical diagnostic or any other procedures.