

**RPC564Hu01 50µg**

**Recombinant Legumain (LGMN)**

**Organism Species: *Homo sapiens* (Human)**

***Instruction manual***

FOR RESEARCH USE ONLY

NOT FOR USE IN CLINICAL DIAGNOSTIC PROCEDURES

---

13th Edition (Revised in Aug, 2023)

**[ PROPERTIES ]**

**Source:** Prokaryotic expression

**Host:** *E.coli*

**Residues:** Val18~Tyr433

**Tags:** N-terminal His Tag

**Subcellular Location:** Lysosome

**Purity:** > 97%

**Traits:** Freeze-dried powder

**Buffer formulation:** PBS, pH7.4, containing 0.01% SKL, 5% Trehalose .

**Original Concentration:** 50µg/mL

**Applications:** Positive Control; Immunogen; SDS-PAGE; WB.

(May be suitable for use in other assays to be determined by the end user.)

**Predicted isoelectric point:** 6.0

**Predicted Molecular Mass:** 51.4kDa

**Accurate Molecular Mass:** 51kDa as determined by SDS-PAGE reducing conditions.

**[ USAGE ]**

Reconstitute in ddH<sub>2</sub>O to a concentration of 0.1-0.2 mg/mL. Do not vortex.

**[ STORAGE AND STABILITY ]**

**Storage:** Avoid repeated freeze/thaw cycles.

Store at 2-8°C for one month.

Aliquot and store at -80°C for 12 months.

**Stability Test:** The thermal stability is described by the loss rate. The loss rate was determined by accelerated thermal degradation test, that is, incubate the protein at 37°C for 48h, and no obvious degradation and precipitation were observed. The loss rate is less than 5% within the expiration date under appropriate storage condition.

**[ SEQUENCE ]**

VPI DDPEDGGKHW VVIVAGSNGW YNYRHQADAC  
 HAYQIIHRNG IPDEQIVVMM YDDIAYSEDN PTPGIVINRP NGTDVYQGVP  
 KDYTGEDVTP QNFLAVLRGD AEAVKGIGSG KVLKSGPQDH VFIYFTDHGS  
 TGILVFPNED LHVKDLNETI HYMYKHKMYR KMFYIEACE SGSMMNHLPD  
 NINVYATTA NPRESSYACY YDEKRSTYLG DWYSVNW MED SDVEDLTKET  
 LHKQYHLVKS HTNTSHVMQY GNKTISTMKV MQFQGMKRKA SSPVPLPPVT  
 HLDLTPSPDV PLTIMKRKLM NTNDLEESRQ LTEEIQRHLD ARHLIEKSVR  
 KIVSLLAASE AEVEQLLSER APLTGHSCYP EALLHFRTHC FNWHSPTYEY  
 ALRHLYVLVN LCEKPYPLHR IKLSMDHVCL GHY

**[ IDENTIFICATION ]**

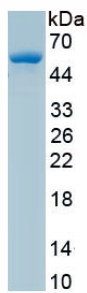


Figure. SDS-PAGE

**[ IMPORTANT NOTE ]**

The kit is designed for research use only, we will not be responsible for any issue if the kit was used in clinical diagnostic or any other procedures.