

RPB406Hu01 50µg

Recombinant Lipopolysaccharide Binding Protein (LBP)

Organism Species: *Homo sapiens (Human)*

Instruction manual

FOR RESEARCH USE ONLY

NOT FOR USE IN CLINICAL DIAGNOSTIC PROCEDURES

13th Edition (Revised in Aug, 2023)

[PROPERTIES]

Source: Prokaryotic expression

Host: *E.coli*

Residues: Asn27~Val481

Tags: N-terminal His Tag

Subcellular Location: Secreted

Purity: > 80%

Traits: Freeze-dried powder

Buffer formulation: PBS, pH7.4, containing 0.01% SKL, 5% Trehalose .

Original Concentration: 100µg/mL

Applications: Positive Control; Immunogen; SDS-PAGE; WB.

(May be suitable for use in other assays to be determined by the end user.)

Predicted isoelectric point: 6.4

Predicted Molecular Mass: 52.4kDa

Accurate Molecular Mass: 52&10-14kDa as determined by SDS-PAGE reducing conditions.

[USAGE]

Reconstitute in ddH₂O to a concentration of 0.1-0.25 mg/mL. Do not vortex.

[STORAGE AND STABILITY]

Storage: Avoid repeated freeze/thaw cycles.

Store at 2-8°C for one month.

Aliquot and store at -80°C for 12 months.

Stability Test: The thermal stability is described by the loss rate. The loss rate was determined by accelerated thermal degradation test, that is, incubate the protein at 37°C for 48h, and no obvious degradation and precipitation were observed. The loss rate is less than 5% within the expiration date under appropriate storage condition.

[SEQUENCE]

```

                                NPGL VARITDKGLQ YAAQEGLLAL
QSELLRITLP DFTGDLRIPH VGRGRYEFHS LNIHSCCELLH SALRPVPGQG
LSLSISDSSI RVQGRWKVRK SFFKLQGSFD VSVKGISISV NLLLGSESSG
RPTVTASSCS SDIADVEVDM SGDLGWLLNL FHNQIESKFQ KVLESRICEM
IQKSVSSDLQ PYLQTLPTTT EIDSFADIDY SLVEAPRATA QMLEVMFKGE
IFHRNHRSPV TLLAAVMSLP EEHNKMVYFA ISDYVFNTAS LUYHEEGLN
FSITDDMIPP DSNIRLTKS FRPFVRLAR LYPNMNLELQ GSVPSAPLLN
FSPGNLSVDP YMEIDAFVLL PSSSKEPVFR LSVATNVSAT LTFNTSKITG
FLKPGKVKVE LKESKVGLFN AELLEALLNY YILNTFYPKF NDKLAEGFPL
PLLKRVQLYD LGLQIHKDFL FLGANVQYMR V

```

[IDENTIFICATION]

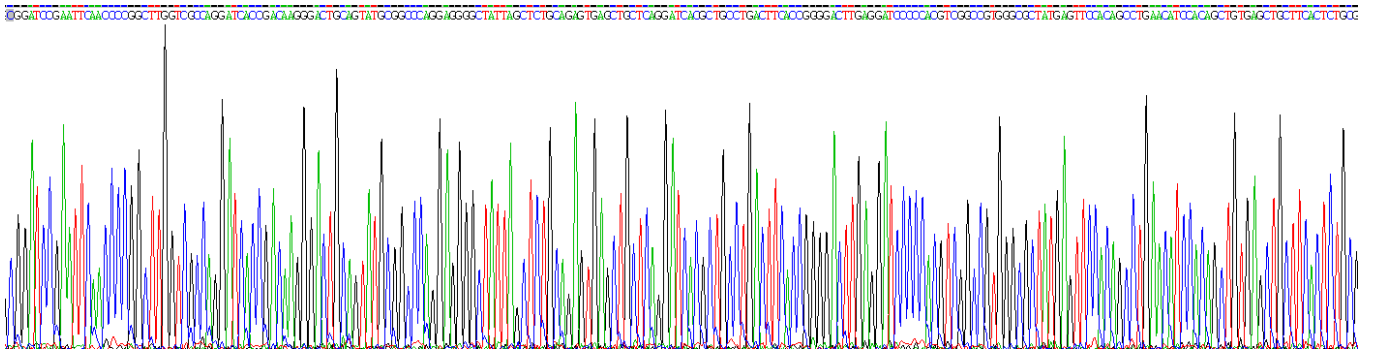


Figure . Gene Sequencing (extract)

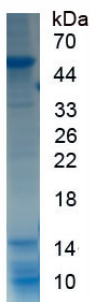


Figure. SDS-PAGE

[IMPORTANT NOTE]

The kit is designed for research use only, we will not be responsible for any issue if the kit was used in clinical diagnostic or any other procedures.