

RPB406Hu02 50ug
Recombinant Lipopolysaccharide Binding Protein (LBP)
Organism Species: *Homo sapiens (Human)*
Instruction manual

FOR RESEARCH USE ONLY
NOT FOR USE IN CLINICAL DIAGNOSTIC PROCEDURES

12th Edition (Revised in Aug, 2016)

[PROPERTIES]

Source: Prokaryotic expression

Host: *E.coli*

Residues: Asn27~Val481

Tags: N-terminal His Tag

Subcellular Location: Secreted, Extracellular matrix

Purity: > 80%

Traits: Freeze-dried powder

Buffer formulation: 20mM Tris, pH8.0.

Original Concentration: 200µg/mL

Applications: Positive Control; Immunogen; SDS-PAGE; WB.

(May be suitable for use in other assays to be determined by the end user.)

Predicted isoelectric point: 6.7

Predicted Molecular Mass: 54.5kDa

Accurate Molecular Mass: 55kDa as determined by SDS-PAGE reducing conditions.

[USAGE]

Reconstitute in 20mM Tris, 150mM NaCl (pH8.0) to a concentration of 0.1-1.0 mg/mL. Do not vortex.

[STORAGE AND STABILITY]

Storage: Avoid repeated freeze/thaw cycles.

Store at 2-8°C for one month.

Aliquot and store at -80°C for 12 months.

Stability Test: The thermal stability is described by the loss rate. The loss rate was determined by accelerated thermal degradation test, that is, incubate the protein at 37°C for 48h, and no obvious degradation and precipitation were observed. The loss rate is less than 5% within the expiration date under appropriate storage condition.

[SEQUENCE]

NPGL VARITDKGLQ YAAQEGLLAL
 QSELLRITLP DFTGDLRIPH VGRGRYEFHS LNIHSCCELLH SALRPVPGQG
 LLSISDSSI RVQGRWKVRK SFFKLQGSFD VSVKGISISV NLLLGSESSG
 RPTVTASSCS SDIADVEVDM SGDLGWLLNL FHNQIESKFQ KVLESRICEM
 IQKSVSSDLQ PYLQTLPVTT EIDSFADIDY SLVEAPRATA QMLEVMFKGE
 IFHRNHRSPV TLLAAVMSLP EEHNKMVYFA ISDYVFNTAS LUYHEEGYLN
 FSITDDMIPP DSNIRLTTKS FRPFVPRLAR LYPNMNLELQ GSVPSAPLLN
 FSPGNLSVDP YMEIDAFVLL PSSSKEPVFR LSVATNVSAT LTFNTSKITG
 FLKPGKVKVE LKESKVGLFN AELLEALLNY YILNTFYPKF NDKLAEGFPL
 PLLKRVQLYD LGLQIHKDFL FLGANVQYMR V

[IDENTIFICATION]

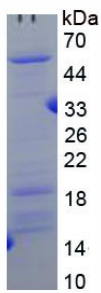


Figure. SDS-PAGE

[IMPORTANT NOTE]

The kit is designed for research use only, we will not be responsible for any issue if the kit was used in clinical diagnostic or any other procedures.