

**RPB406Po01 50ug**  
**Recombinant Lipopolysaccharide Binding Protein (LBP)**  
**Organism Species: *Sus scrofa*; *Porcine* (Pig)**  
***Instruction manual***

FOR RESEARCH USE ONLY  
NOT FOR USE IN CLINICAL DIAGNOSTIC PROCEDURES

---

12th Edition (Revised in Aug, 2016)

**[ PROPERTIES ]**

**Source:** Prokaryotic expression

**Host:** *E.coli*

**Residues:** Asn36~Thr474

**Tags:** N-terminal His Tag

**Subcellular Location:** Extracellular matrix

**Purity:** > 97%

**Traits:** Freeze-dried powder

**Buffer formulation:** PBS, pH7.4, containing 0.01% SKL, 5% Trehalose.

**Original Concentration:** 200µg/mL

**Applications:** Positive Control; Immunogen; SDS-PAGE; WB.

(May be suitable for use in other assays to be determined by the end user.)

**Predicted isoelectric point:** 6.0

**Predicted Molecular Mass:** 56.5kDa

**Accurate Molecular Mass:** 57kDa as determined by SDS-PAGE reducing conditions.

**[ USAGE ]**

Reconstitute in 10mM PBS (pH7.4) to a concentration of 0.1-1.0 mg/mL. Do not vortex.

**[ STORAGE AND STABILITY ]**

**Storage:** Avoid repeated freeze/thaw cycles.

Store at 2-8°C for one month.

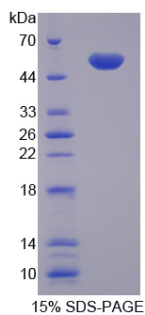
Aliquot and store at -80°C for 12 months.

**Stability Test:** The thermal stability is described by the loss rate. The loss rate was determined by accelerated thermal degradation test, that is, incubate the protein at 37°C for 48h, and no obvious degradation and precipitation were observed. The loss rate is less than 5% within the expiration date under appropriate storage condition.

**[ SEQUENCE ]**

NKGL E YVAREGVATL  
QSKLHEVTLP DFNGDFKIKY MGRGHYEFHS LDIHSCCELLG STLTPLPGQG  
LYLAISDSSI RVKKGKWKVRK GILKLDGSFD VKVKGITISV NLLLGSGSSG  
RPTVAVSSCS SHIDDVETHM SGDLSWLLNL FHNQIESRFR RTLESKICEE  
IQDLVASDLQ PYLQTVPVTT EIDNLAGIDY SLVEAPRATA QMLDVMIKGE  
IFSLDHRSPV GFLAPVMRLP EEHSRMVYFA VSDYVFKTAS LUYNEAGFLN  
FSITDDLVP TSNIRLTTNS FRTFVPRLAR LYPNMNLELW GAMVSXPXLN  
FGSGLSSTP QIEVEGFVLL PNSVREPVER LGMATNVSAAL LTFNTSKITG  
FLKPGKIQVE LKESKVGIFN VELLEALLNY YLLNNLYPKV NDKLAEGFPL  
PLLNYIQLHD PVLQIHKDFL LLGT

### [ IDENTIFICATION ]



### [ IMPORTANT NOTE ]

The kit is designed for research use only, we will not be responsible for any issue if the kit was used in clinical diagnostic or any other procedures.