

RPB406Po03 100µg
Recombinant Lipopolysaccharide Binding Protein (LBP)
Organism Species: *Sus scrofa*; *Porcine* (Pig)
Instruction manual

FOR RESEARCH USE ONLY
NOT FOR USE IN CLINICAL DIAGNOSTIC PROCEDURES

12th Edition (Revised in Aug, 2016)

[PROPERTIES]

Source: Prokaryotic expression

Host: *E.coli*

Residues: Asn36~Thr474

Tags: Two N-terminal Tags, His-tag and SUMO-tag

Subcellular Location: Extracellular matrix

Purity: > 80%

Traits: Freeze-dried powder

Buffer formulation: PBS, pH7.4, containing 0.01% SKL, 5% Trehalose.

Original Concentration: 200µg/mL

Applications: Positive Control; Immunogen; SDS-PAGE; WB.

(May be suitable for use in other assays to be determined by the end user.)

Predicted isoelectric point: 6.0

Predicted Molecular Mass: 66.5kDa

Accurate Molecular Mass: 67kDa as determined by SDS-PAGE reducing conditions.

[USAGE]

Reconstitute in 10mM PBS (pH7.4) to a concentration of 0.1-1.0 mg/mL. Do not vortex.

[STORAGE AND STABILITY]

Storage: Avoid repeated freeze/thaw cycles.

Store at 2-8°C for one month.

Aliquot and store at -80°C for 12 months.

Stability Test: The thermal stability is described by the loss rate. The loss rate was determined by accelerated thermal degradation test, that is, incubate the protein at 37°C for 48h, and no obvious degradation and precipitation were observed. The loss rate is less than 5% within the expiration date under appropriate storage condition.

[SEQUENCE]

NKGLE YVAREGVATL
 QSKLHEVTLP DFNGDFKIKY MGRGHYEFHS LDIHSCCELLG STLTPLPGQG
 LYLAISDSSI RVKKGKWKVRK GILKLDGSFD VKVKGITISV NLLLGSGSSG
 RPTVAVSSCS SHIDDVETHM SGDLSWLLNL FHNQIESRFR RTLESKICEE
 IQDLVASDLQ PYLQTVPVTT EIDNLAGIDY SLVEAPRATA QMLDVMIKGE
 IFSLDHRSPV GFLAPVMRLP EEHSRMVYFA VSDYVFKTAS LUYNEAGFLN
 FSITDDLVPV TSNIRLTTNS FRTFVPRLAR LYPNMNLELW GAMVSPXPLN
 FGSGNLSSTP QIEVEGFVLL PNSVREPVFR LGMATNVSAA LTFNTSKITG
 FLKPGKIQVE LKESKVGIFN VELLEALLNY YLLNNLYPKV NDKLAEGFPL
 PLLNYIQLHD PVLQIHKDFL LLGT

[IDENTIFICATION]

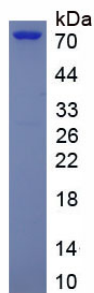


Figure. SDS-PAGE

[IMPORTANT NOTE]

The kit is designed for research use only, we will not be responsible for any issue if the kit was used in clinical diagnostic or any other procedures.