

**RPX261PI01 100µg**

**Recombinant Long Flagella 2 (LF2)**

**Organism Species: *Spinacia oleracea* (Spinach)**

***Instruction manual***

FOR RESEARCH USE ONLY

NOT FOR USE IN CLINICAL DIAGNOSTIC PROCEDURES

---

13th Edition (Revised in Aug, 2023)

**[ PROPERTIES ]**

**Source:** Prokaryotic expression

**Host:** *E.coli*

**Residues:** Met1~Val354

**Tags:** N-terminal His Tag

**Subcellular Location:** Secreted

**Purity:** > 90%

**Traits:** Freeze-dried powder

**Buffer formulation:** 20mM Tris, 150mM NaCl, pH8.0, containing 0.01% skl, 5%Trehalose.

**Original Concentration:** 200µg/mL

**Applications:** Positive Control; Immunogen; SDS-PAGE; WB.

(May be suitable for use in other assays to be determined by the end user.)

**Predicted isoelectric point:** 7.9

**Predicted Molecular Mass:** 41.2kDa

**Accurate Molecular Mass:** 41kDa as determined by SDS-PAGE reducing conditions.

**[ USAGE ]**

Reconstitute in 20mM Tris, 150mM NaCl (pH8.0) to a concentration of 0.1-1.0 mg/mL. Do not vortex.

**[ STORAGE AND STABILITY ]**

**Storage:** Avoid repeated freeze/thaw cycles.

Store at 2-8°C for one month.

Aliquot and store at -80°C for 12 months.

**Stability Test:** The thermal stability is described by the loss rate. The loss rate was determined by accelerated thermal degradation test, that is, incubate the protein at 37°C for 48h, and no obvious degradation and precipitation were observed. The loss rate is less than 5% within the expiration date under appropriate storage condition.

**[ SEQUENCE ]**

MPSTLQGTFFH TYRIIRRLGQ GAFGEVSLAG VLETGEVVAL KRIHIRNTGG  
 IPDVVVREIK ALQSVSHPNV VALLDVFPKG QAIYLVQEYC TTDLAALLRR  
 LPAPPPERIA KGLMLQLCRG LEALHAEGIM HRDVKPSNTL LSAASGTAKL  
 ADCGLARPLD GGERPAYTHA VATRWYRAPE LLYGARAYGP AVDVWALGLV  
 FAELLGLSPL VPGDNDIDQL GRVIATFGSM EPVWLGVRAL PDWGKIAFPH  
 CEPLPLGDLL PGAPAAALEF LAAFLRYDPA KRITAACAVR STYLTATQPL  
 PADEAEVAAW LTATLAANEA AVAALKQQA AGSAAQLHVG SALRQPRAAS  
 LPLV

**[ IDENTIFICATION ]**

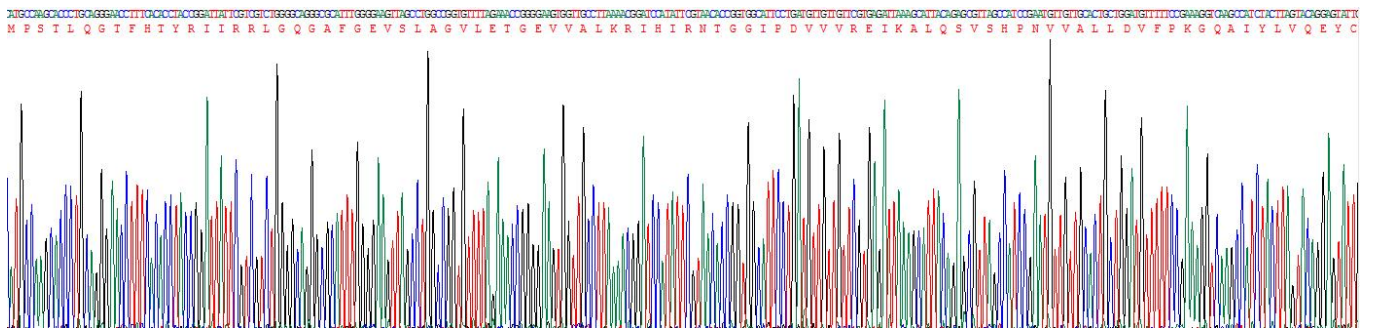


Figure. Gene Sequencing (Extract)

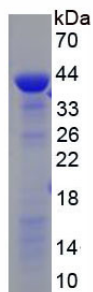


Figure. SDS-PAGE

**[ IMPORTANT NOTE ]**

The kit is designed for research use only, we will not be responsible for any issue if the kit was used in clinical diagnostic or any other procedures.