

RPB593Mu01 50µg
Recombinant Lymphocyte Antigen 75 (LY75)
Organism Species: *Mus musculus* (Mouse)
Instruction manual

FOR RESEARCH USE ONLY
NOT FOR USE IN CLINICAL DIAGNOSTIC PROCEDURES

12th Edition (Revised in Aug, 2016)

[PROPERTIES]

Source: Prokaryotic expression

Host: *E.coli*

Residues: Cys216~Pro503

Tags: N-terminal His Tag

Subcellular Location: Membrane

Purity: > 90%

Traits: Freeze-dried powder

Buffer formulation: 20mM Tris, 150mM NaCl, pH8.0, containing 0.01% skl, 5%Trehalose.

Original Concentration: 500µg/mL

Applications: Positive Control; Immunogen; SDS-PAGE; WB.

(May be suitable for use in other assays to be determined by the end user.)

Predicted isoelectric point: 6.1

Predicted Molecular Mass: 35.9kDa

Accurate Molecular Mass: 36kDa as determined by SDS-PAGE reducing conditions.

[USAGE]

Reconstitute in 20mM Tris, 150mM NaCl (pH8.0) to a concentration of 0.1-1.0 mg/mL. Do not vortex.

[STORAGE AND STABILITY]

Storage: Avoid repeated freeze/thaw cycles.

Store at 2-8°C for one month.

Aliquot and store at -80°C for 12 months.

Stability Test: The thermal stability is described by the loss rate. The loss rate was determined by accelerated thermal degradation test, that is, incubate the protein at 37°C for 48h, and no obvious degradation and precipitation were observed. The loss rate is less than 5% within the expiration date under appropriate storage condition.

[SEQUENCE]

```

      CEGNW EKNEQIGSCY QFNNQEILSW KEAYVSCQNQ
GADLLSIHSA AELAYITGKE DIARLVWLGL NQLYSARGWE WSDFRPLKFL
NWDPGTPVAP VIGGSSCARM DTESGLWQSV SCESQOPYVC KKPLNNTLEL
PDVWTYTDTH CHVGWLPNNG FCYLLANESS SWDAAHLKCK AFGADLISMH
SLADVEVVVT KLHNGDVKKE IWTGLKNTNS PALFQWSDGT EVTLTYWEN
EPSVPFNKTP NCVSYLGKLG QWKVQSCEKK LRYVCKKKGE ITKDAESDKL
CPP
  
```

[IDENTIFICATION]

JTGTAAGGTAACCTGGCAAGAGATGACCAATTGGAGGTCTTCCAAATTAAATATCAGGAAATCTGTCTTGGAAAGACTTATGTTCTCTCAGAACCAAGGAGCTGACTTACTGACATCCACAGTGTCTGGAAATTAAGCTTACATTAGGGGAAAGAGGCATTGCTAGACTTGTTCAGCTTGGACTGAATCAGCTCTATTCT
 C E G N W E K N E Q I G S C Y Q F N N Q E I L S V K E A Y V S C Q N Q G A D L L S I H S A A E L A Y I T G K E D I A R L V W L G L N Q L Y S .

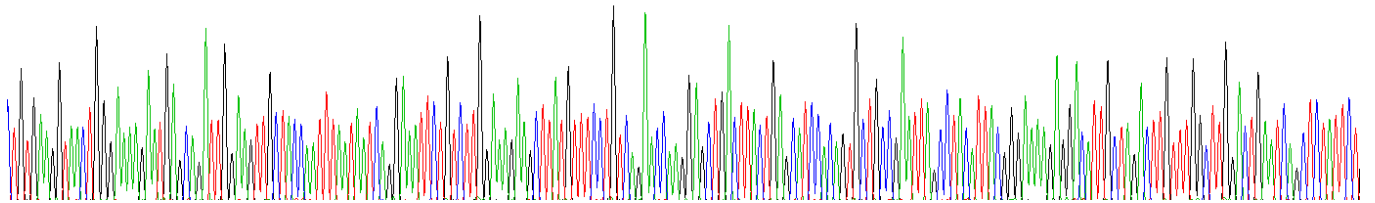
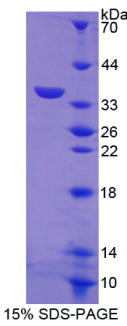


Figure. Gene Sequencing (Extract)



[IMPORTANT NOTE]

The kit is designed for research use only, we will not be responsible for any issue if the kit was used in clinical diagnostic or any other procedures.