

RPB895Mu01 200µg

Recombinant Mannose Associated Serine Protease 1 (MASP1)

Organism Species: *Mus musculus* (Mouse)

Instruction manual

FOR RESEARCH USE ONLY

NOT FOR USE IN CLINICAL DIAGNOSTIC PROCEDURES

13th Edition (Revised in Aug, 2023)

[PROPERTIES]

Source: Prokaryotic expression

Host: *E.coli*

Residues: His25~Arg453

Tags: N-terminal His Tag

Subcellular Location: Secreted

Purity: > 90%

Traits: Freeze-dried powder

Buffer formulation: PBS, pH7.4, containing 0.01% SKL, 5% Trehalose.

Original Concentration: 50µg/mL

Applications: Positive Control; Immunogen; SDS-PAGE; WB.

(May be suitable for use in other assays to be determined by the end user.)

Predicted isoelectric point: 5.1

Predicted Molecular Mass: 52.6kDa

Accurate Molecular Mass: 53kDa as determined by SDS-PAGE reducing conditions.

[USAGE]

Reconstitute in ddH₂O to a concentration of 0.1-0.5 mg/mL. Do not vortex.

[STORAGE AND STABILITY]

Storage: Avoid repeated freeze/thaw cycles.

Store at 2-8°C for one month.

Aliquot and store at -80°C for 12 months.

Stability Test: The thermal stability is described by the loss rate. The loss rate was determined by accelerated thermal degradation test, that is, incubate the protein at 37°C for 48h, and no obvious degradation and precipitation were observed. The loss rate is less than 5% within the expiration date under appropriate storage condition.

[SEQUENCE]

```

                HTVELN EMFGQIQSPG YPDSYPSDSE
VTWNITVPEG  FRIKLYFMHF NLESSYLCEY DYVKVETEDQ VLATFCGRET
TDTEQTPGQE  VVLSPGTFMS  VTFRSDFSNE ERFTGFDAHY MAVDVDECKE
REDEELSCDH  YCHNYIGGY  CSCRFGYILH TDNRTCRCVEC SGNLFTQRTG
TITSPDYPNP  YPKSSECSYT IDLEEGFMVS LQFEDIFDIE DHPEVPCPYD
YIKIKAGSKV  WGPFCGEKSP EPISTQTHSV QILFRSDNSG ENRGWRLSYR
AAGNECPKLQ  PPVYGKIEPS QAVYSFKDQV LVSCDTGYKV LKDNEVMDTF
QIECLKDGAW  SNKIPTCKIV DCGAPAGLKH GLVTFSTRNN LTTYKSEIRY
SCQQPYKML  HNTTGVYTCS AHGTWTNEVL KRSLPTCLPV CGVPKFSRKQ
ISR

```

[IDENTIFICATION]

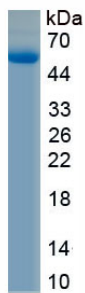


Figure. SDS-PAGE

[IMPORTANT NOTE]

The kit is designed for research use only, we will not be responsible for any issue if the kit was used in clinical diagnostic or any other procedures.