

RPA099Eq01 100µg

Recombinant Matrix Metalloproteinase 13 (MMP13)

Organism Species: *Equus caballus*; Equine (Horse)

Instruction manual

FOR RESEARCH USE ONLY

NOT FOR USE IN CLINICAL DIAGNOSTIC PROCEDURES

13th Edition (Revised in Aug, 2023)

[PROPERTIES]

Source: Prokaryotic expression

Host: *E.coli*

Residues: Met1~Cys472

Tags: N-terminal His Tag

Subcellular Location: Secreted, Extracellular matrix

Purity: > 90%

Traits: Freeze-dried powder

Buffer formulation: PBS, pH7.4, containing 0.01% SKL, 5% Trehalose .

Original Concentration: 200µg/mL

Applications: Positive Control; Immunogen; SDS-PAGE; WB.

(May be suitable for use in other assays to be determined by the end user.)

Predicted isoelectric point: 5.0

Predicted Molecular Mass: 57.9kDa

Accurate Molecular Mass: 60kDa as determined by SDS-PAGE reducing conditions.

[USAGE]

Reconstitute in 10mM PBS (pH7.4) to a concentration of 0.1-1.0 mg/mL. Do not vortex.

[STORAGE AND STABILITY]

Storage: Avoid repeated freeze/thaw cycles.

Store at 2-8°C for one month.

Aliquot and store at -80°C for 12 months.

Stability Test: The thermal stability is described by the loss rate. The loss rate was determined by accelerated thermal degradation test, that is, incubate the protein at 37°C for 48h, and no obvious degradation and precipitation were observed. The loss rate is less than 5% within the expiration date under appropriate storage condition.

[SEQUENCE]

MHPGVLA AFLFLSWTRCWSLPV PND D D D D D D M S E E D F Q L A E R Y L K S Y Y Y P L N P A G I L K K T A A N S V V D R
L R E M Q S F F G L E V T G K L D D N T L D I M K K P R C G V P D V G E Y N V F P R T L K W P K M N L T Y R I V N Y T P D L T H S E V E
K A F K K A F K V W S D V T P L N F T R L Y N G T A D I M I S F G T K E H G D F Y P F D G P S G L L A H A F P P G P N Y G G D A H F D D
D E T W T S S S K G Y N L F L V A A H E F G H S L G L D H S K D P G A L M F P I Y T Y T G K S H F V L P D D D V Q G I Q Y L Y G P G D E
D P N P K H P K T P D K C D P S L S L D A I T S L R G E T M V F K D R F F W R L H P Q L V D A E L F L T K S F W P E L P N R I D A A Y E
H P S K D L I F I F R G R K F W A L N G Y D I L E G Y P Q K I S E L G F P K D V K K I S A A V H F E D T G K T L F F S G N Q V W R Y D D
T N R M M D K D Y P R L I E E D F P G I G D K V D A V Y E K N G Y I Y F F N G P I Q F E Y S I W S N R I V R V M P T N S L L W C

[IDENTIFICATION]

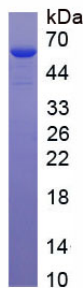


Figure. SDS-PAGE

[IMPORTANT NOTE]

The kit is designed for research use only, we will not be responsible for any issue if the kit was used in clinical diagnostic or any other procedures.