

RPA100Hu02 50µg

Recombinant Matrix Metalloproteinase 2 (MMP2)

Organism Species: *Homo sapiens (Human)*

Instruction manual

FOR RESEARCH USE ONLY

NOT FOR USE IN CLINICAL DIAGNOSTIC PROCEDURES

13th Edition (Revised in Aug, 2023)

[PROPERTIES]

Source: Prokaryotic expression

Host: *E.coli*

Residues: Tyr110~Cys660

Tags: N-terminal His Tag

Subcellular Location: Membrane, Nucleus, Extracellular matrix

Purity: > 80%

Traits: Freeze-dried powder

Buffer formulation: PBS, pH7.4, containing 0.01% SKL, 1mM DTT, 5% Trehalose and Proclin300.

Original Concentration: 450µg/mL

Applications: Positive Control; Immunogen; SDS-PAGE; WB.

(May be suitable for use in other assays to be determined by the end user.)

Predicted isoelectric point: 5.2

Predicted Molecular Mass: 63.3kDa

Accurate Molecular Mass: 63kDa as determined by SDS-PAGE reducing conditions.

[USAGE]

Reconstitute in 10mM PBS (pH7.4) to a concentration of 0.1-1.0 mg/mL. Do not vortex.

[STORAGE AND STABILITY]

Storage: Avoid repeated freeze/thaw cycles.

Store at 2-8°C for one month.

Aliquot and store at -80°C for 12 months.

Stability Test: The thermal stability is described by the loss rate. The loss rate was determined by accelerated thermal degradation test, that is, incubate the protein at 37°C for 48h, and no obvious degradation and precipitation were observed. The loss rate is less than 5% within the expiration date under appropriate storage condition.

[SEQUENCE]

```

Y NFFPRKPKWD KNQITYRIIG YTPDLDPETV DDAFARAFQV
WSDVTPLRFS RIHDGEADIM INFGRWEHGD GYPFDGKDGL LAHAFAPGTG
VGGDSHFDDD ELWTLGEGQV VRVKYGNADG EYCKFPFLFN GKEYNSCTDT
GRSDGFLWCS TTYNFEKDGK YGFCPHEALF TMGGNAEGQP CKFPFRFQGT
SYDSCTTEGR TDGYRWC GTT EDYDRDKKYG FCPETAMSTV GGNSEGAPCV
FPFTFLGNKY ESCTSAGRSD GKMWCATTAN YDDDRKWGFC PDQGYSFLV
AAHEFGHAMG LEHSQDPGAL MAPIYTYTKN FRLSQDDIKG IQELYGASPD
IDLGTGPTPT LGPVTPEICK QDIVFDGIAQ IRGEIFFFKD RFIWRTVTPR
DKPMGPLLVA TFWEPEPEKI DAVYEAPQEE KAVFFAGNEY WIYSASTLER
GYPKPLTSLG LPPDVQRVDA AFNWSKNKKT YIFAGDKFWR YNEVKKKMDP
GFPKLIADAW NAIPDNLDAV VDLQGGGHSY FFKGAYYLKL ENQSLKSVKF
GSIKSDWLGC
    
```

[IDENTIFICATION]

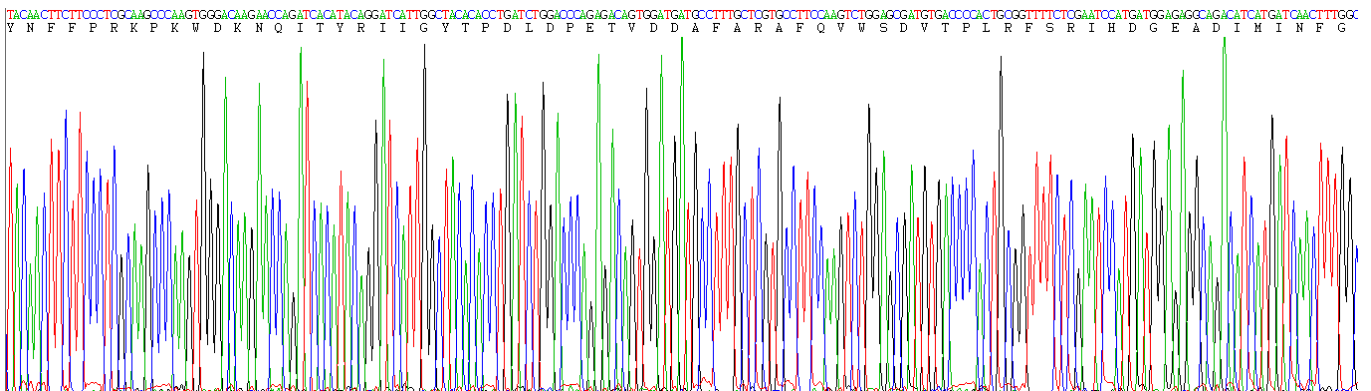


Figure. Gene Sequencing (Extract)

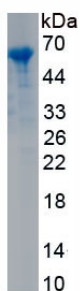


Figure. SDS-PAGE

[IMPORTANT NOTE]

The kit is designed for research use only, we will not be responsible for any issue if the kit was

used in clinical diagnostic or any other procedures.