

RPA101Hu04 10µg

Recombinant Matrix Metalloproteinase 3 (MMP3)

Organism Species: *Homo sapiens (Human)*

Instruction manual

FOR RESEARCH USE ONLY

NOT FOR USE IN CLINICAL DIAGNOSTIC PROCEDURES

13th Edition (Revised in Aug, 2023)

[PROPERTIES]

Source: Prokaryotic expression

Host: *E.coli*

Residues: Tyr18~Cys477

Tags: N-terminal His Tag

Subcellular Location: Secreted, Extracellular matrix

Purity: > 90%

Traits: Freeze-dried powder

Buffer formulation: 20mM Tris, 150mM NaCl, pH8.0, containing 0.01% skl, 5%Trehalose.

Original Concentration: 150µg/mL

Applications: Positive Control; Immunogen; SDS-PAGE; WB.

(May be suitable for use in other assays to be determined by the end user.)

Predicted isoelectric point: 5.9

Predicted Molecular Mass: 55.9kDa

Accurate Molecular Mass: 56kDa as determined by SDS-PAGE reducing conditions.

[USAGE]

Reconstitute in 20mM Tris, 150mM NaCl (pH8.0) to a concentration of 0.1-1.0 mg/mL. Do not vortex.

[STORAGE AND STABILITY]

Storage: Avoid repeated freeze/thaw cycles.

Store at 2-8°C for one month.

Aliquot and store at -80°C for 12 months.

Stability Test: The thermal stability is described by the loss rate. The loss rate was determined by accelerated thermal degradation test, that is, incubate the protein at 37°C for 48h, and no obvious degradation and precipitation were observed. The loss rate is less than 5% within the expiration date under appropriate storage condition.

[SEQUENCE]

```

YPL DGAARGEDTS MNLVQKYLEN YYDLKKDVKQ
FVRRKDSGPV VKKIREMQKF LGLEVTGKLD SDTLEV MRKP RCGVPDVGHF
RTFPGIPKWR KTHLYRIVN YTPDLPKDAV DSAVEKALKV WEEVTPLTFS
RLYEGEADIM ISFAVREHGD FYPFDGPGNV LAHAYAPGPG INGDAHFD DD
EQWTKD TTGT NLFLVAAHEI GHSLGLFHSA NTEALMYPLY HSLTDLTRFR
LSQDDINGIQ SLYGPPD SP ETPLVPTEPV PPEPGTPANC DPALSFDAVS
TLRGEILIFK DRHFWRKSLR KLEPELHLIS SFWPSLPSGV DAAYEVTSKD
LVFIFKGNQF WAIRGNEVRA GYPRGIHTLG FPPTVRKIDA AISDKEKNKT
YFFVEDKYWR FDEKRNSMEP GFPKQIAEDF PGIDSKIDAV FEEFGFFYFF
TGSSQLE FDP NAKKVTHTLK SNSWLNC
    
```

[IDENTIFICATION]

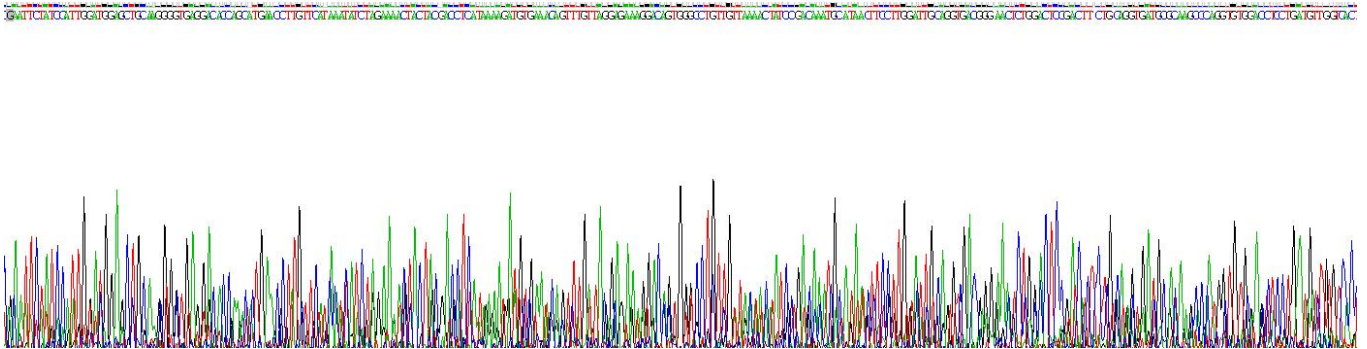


Figure . Gene Sequencing (extract)

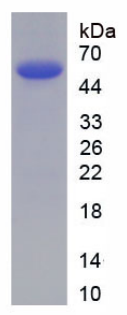


Figure. SDS-PAGE

[IMPORTANT NOTE]

The kit is designed for research use only, we will not be responsible for any issue if the kit was used in clinical diagnostic or any other procedures.