

RPA101Po01 100ug

Recombinant Matrix Metalloproteinase 3 (MMP3)

Organism Species: *Sus scrofa*; *Porcine (Pig)*

Instruction manual

FOR RESEARCH USE ONLY

NOT FOR USE IN CLINICAL DIAGNOSTIC PROCEDURES

12th Edition (Revised in Aug, 2016)

[PROPERTIES]

Source: Prokaryotic expression

Host: *E.coli*

Residues: Tyr18~Cys477

Tags: N-terminal His Tag

Subcellular Location: Secreted, Extracellular matrix

Purity: > 90%

Traits: Freeze-dried powder

Buffer formulation: 20mM Tris, 150mM NaCl, pH8.0, containing 1mM EDTA, 1mM DTT, 0.01% SKL, 5% Trehalose and Proclin300.

Original Concentration: 200µg/mL

Applications: Positive Control; Immunogen; SDS-PAGE; WB.

(May be suitable for use in other assays to be determined by the end user.)

Predicted isoelectric point: 5.4

Predicted Molecular Mass: 56.0kDa

Accurate Molecular Mass: 56kDa as determined by SDS-PAGE reducing conditions.

[USAGE]

Reconstitute in 20mM Tris, 150mM NaCl (pH8.0) to a concentration of 0.1-1.0 mg/mL. Do not vortex.

[STORAGE AND STABILITY]

Storage: Avoid repeated freeze/thaw cycles.

Store at 2-8°C for one month.

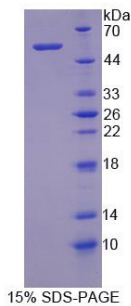
Aliquot and store at -80°C for 12 months.

Stability Test: The thermal stability is described by the loss rate. The loss rate was determined by accelerated thermal degradation test, that is, incubate the protein at 37°C for 48h, and no obvious degradation and precipitation were observed. The loss rate is less than 5% within the expiration date under appropriate storage condition.

[SEQUENCE]

YPV DRAAVDKDDS MDFVQKYLED YYNLTKDVKQ
VRRKDSSLV VKKIQQEMQKF LGLEVTGKLD SNTLEVMHKP RCGVPDVG YF
STFPGLPKWR KNDLTYRIVN YTLDLPRSVI DSTIEKALKI WEEVTPLTFS
KISEGEADIM ITFAVREHGD FSPFDGPGKV LAHAYAPGPG IYGDAHFD
EQWTKDTSKV NLFLVAAHEL GHSLGLFHST DSNALMYPVY NPLTDLARFR
LSQDDVNGIQ SLYGPPASP PEPVEPTST PPEPGTPATC DPALSFDAIS
TLRGEILFFK DRHFWRKSR RLEPEFHLIS SFWPPLSSI DAACEVISKD
TVFIFKGTQF WAIRGNDVQP GYPRSIHTLG FPSTVKKIDA AISDKETKKT
YFFVEDKYWR FDEKRQSMEP GFPKQIVEDF PGVEPKVDAV FEAFFFFYFF
NGSSQFEFDP NAKKVTHVLK SNKWLNC

[IDENTIFICATION]



[IMPORTANT NOTE]

The kit is designed for research use only, we will not be responsible for any issue if the kit was used in clinical diagnostic or any other procedures.