

RPL702Hu01 50µg

Recombinant Microtubule Associated Protein 1 Light Chain 3 Beta (MAP1LC3b)

Organism Species: *Homo sapiens (Human)*

Instruction manual

FOR RESEARCH USE ONLY

NOT FOR USE IN CLINICAL DIAGNOSTIC PROCEDURES

13th Edition (Revised in Aug, 2023)

[PROPERTIES]

Source: Prokaryotic expression

Host: *E.coli*

Residues: Met1~Gly120

Tags: N-terminal His Tag

Subcellular Location: Membrane, Cytoplasm

Purity: > 90%

Traits: Freeze-dried powder

Buffer formulation: PBS, pH7.4, containing 0.01% SKL, 5% Trehalose .

Original Concentration: 600µg/mL

Applications: Positive Control; Immunogen; SDS-PAGE; WB.

(May be suitable for use in other assays to be determined by the end user.)

Predicted isoelectric point: 8.9

Predicted Molecular Mass: 17.7kDa

Accurate Molecular Mass: 20kDa as determined by SDS-PAGE reducing conditions.

[USAGE]

Reconstitute in 10mM PBS (pH7.4) to a concentration of 0.1-1.0 mg/mL. Do not vortex.

[STORAGE AND STABILITY]

Storage: Avoid repeated freeze/thaw cycles.

Store at 2-8°C for one month.

Aliquot and store at -80°C for 12 months.

Stability Test: The thermal stability is described by the loss rate. The loss rate was determined by accelerated thermal degradation test, that is, incubate the protein at 37°C for 48h, and no obvious degradation and precipitation were observed. The loss rate is less than 5% within the expiration date under appropriate storage condition.

[SEQUENCE]

MPSEKTFKQR RTFEQRVEDV RLIREQHPTK IPVIIERYKG EKQLPVLDKT
KFLVPDHVNM SELIKIIRRR LQLNANQAFF LLVNGHSMVS VSTPISEVYE
SEKDEDGLY MVIASQETFG

[IDENTIFICATION]

ATGGCGTGGGAGGCTTACAGCGGGGCGCTTGGACAGGAGTAGAGGTCGGCTCTTTGSHGGGAGCAGACCAACAAATCCGSGAATAGAGGTAAGGSSGAGAGCGCTTCTGTTCTGGTAAACAGAGTCTTGACTGACAGGTCAGAGTGGTGCCTTCAGGTAATAGAGGSSCTACAGCTCATGCTAATCAGGCTCTCTGTTGGGAGCGGTCAGAGTGC
N P S E K T F K Q K R I F E Q R V E D V R L I R E Q H P T K I P V I I E R Y K G E K Q L P V L D K I K F L V P D H V N M S E L I K I I R R R L Q L N A N Q A F F L L V N G H S M V S V S T P I S E V Y E S E K D E D G L Y M V I A S Q E T F G

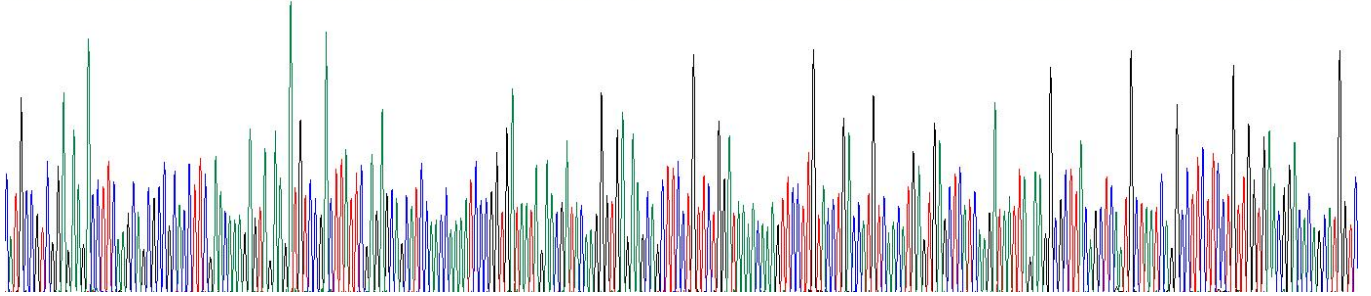


Figure. Gene Sequencing (Extract)

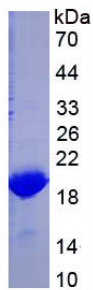


Figure. SDS-PAGE

[IMPORTANT NOTE]

The kit is designed for research use only, we will not be responsible for any issue if the kit was used in clinical diagnostic or any other procedures.