

RPB286Ra01 10µg
Recombinant Milk Fat Globule EGF Factor 8 (MFGE8)
Organism Species: *Rattus norvegicus* (Rat)
Instruction manual

FOR RESEARCH USE ONLY
NOT FOR USE IN CLINICAL DIAGNOSTIC PROCEDURES

13th Edition (Revised in Aug, 2023)

[PROPERTIES]

Source: Prokaryotic expression

Host: *E.coli*

Residues: Cys73~Arg421

Tags: N-terminal His and GST Tag

Subcellular Location: Membrane, Secreted

Purity: > 90%

Traits: Freeze-dried powder

Buffer formulation: 100mMNaHCO₃, 500mMNaCl, pH8.3, containing 0.01% SKL, 5% Trehalose.

Original Concentration: 200µg/mL

Applications: Positive Control; Immunogen; SDS-PAGE; WB.

(May be suitable for use in other assays to be determined by the end user.)

Predicted isoelectric point: 8.6

Predicted Molecular Mass: 69.4kDa

Accurate Molecular Mass: 69kDa as determined by SDS-PAGE reducing conditions.

[USAGE]

Reconstitute in ddH₂O to a concentration of 0.1-1.0 mg/mL. Do not vortex.

[STORAGE AND STABILITY]

Storage: Avoid repeated freeze/thaw cycles.

Store at 2-8°C for one month.

Aliquot and store at -80°C for 12 months.

Stability Test: The thermal stability is described by the loss rate. The loss rate was determined by accelerated thermal degradation test, that is, incubate the protein at 37°C for 48h, and no obvious degradation and precipitation were observed. The loss rate is less than 5% within the expiration date under appropriate storage condition.

[SEQUENCE]

```

CFHDAKCL VTEDTQRGDI FTEYICQCPV
GYSGIHCELG CSTKLGLEGG AIADSQISAS SVYMGFMGLQ RWGPPEARLY
RTGIVNAWTA SSYDSKPWIQ VDFLRKMRVS GVMTQGASRA GRAEYLKTFK
VAYSLDGRRF EFIQDESGTG DKEFMGNQDN NSLKINMFNP TLEAQYIRLY
PVSCHRGCTL RFELLGCELH GCSEPLGLKN NTIPDSQITA SSSYKTWNL
AFGWYPHLGR LDNQGKINAW TAQSNSAKEW LQVDLGTQKK VTGIITQGAR
DFGHIQYVAS YKVAHSDDGV QWTVYEEQGT SKVFQGNLDN NSHKKNIFEK
PFMARYVRVL PLSWHRITL R
    
```

[IDENTIFICATION]

5'ATTCCTTCAGGAGCGAAATGCTGGTGCAGGAGCGAGTGGCCGACATCTTACTGAGTACATCTGCGTCCCTGCGGCTCTCCGATGCGAGCTCCGCTGTCCGAGCCCTTGGAGCCGCTCCATTCGCGATTCCAGATTTCGCTGTCTGGATATCCGTTGATGCGCTGGGCTCGCCGCTGGCTGCTGAGCG

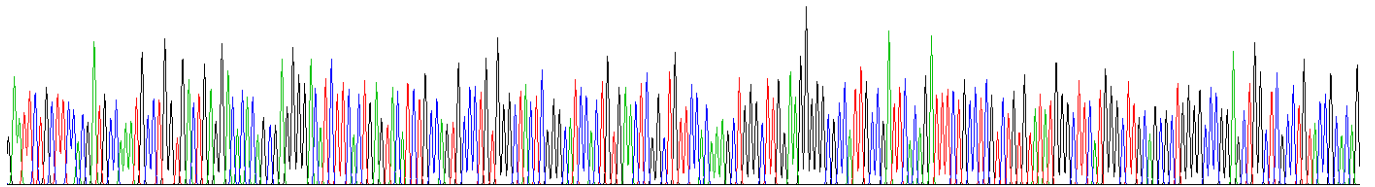
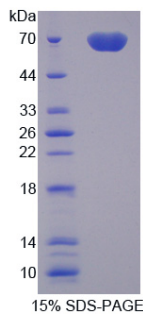


Figure . Gene Sequencing (extract)



[IMPORTANT NOTE]

The kit is designed for research use only, we will not be responsible for any issue if the kit was used in clinical diagnostic or any other procedures.