

RPF591Hu01 200µg

Recombinant Mitofusin 2 (MFN2)

Organism Species: *Homo sapiens (Human)*

Instruction manual

FOR RESEARCH USE ONLY

NOT FOR USE IN CLINICAL DIAGNOSTIC PROCEDURES

13th Edition (Revised in Aug, 2023)

[PROPERTIES]

Source: Prokaryotic expression

Host: *E.coli*

Residues: Met1~Lys316

Tags: N-terminal His Tag

Subcellular Location: Mitochondrion

Purity: > 90%

Traits: Freeze-dried powder

Buffer formulation: PBS, pH7.4, containing 0.01% SKL, 5% Trehalose .

Original Concentration: 450µg/mL

Applications: Positive Control; Immunogen; SDS-PAGE; WB.

(May be suitable for use in other assays to be determined by the end user.)

Predicted isoelectric point: 6.6

Predicted Molecular Mass: 39.4 kDa

Accurate Molecular Mass: 39kDa as determined by SDS-PAGE reducing conditions.

[USAGE]

Reconstitute in 10mM PBS (pH7.4) to a concentration of 0.1-1.0 mg/mL. Do not vortex.

[STORAGE AND STABILITY]

Storage: Avoid repeated freeze/thaw cycles.

Store at 2-8°C for one month.

Aliquot and store at -80°C for 12 months.

Stability Test: The thermal stability is described by the loss rate. The loss rate was determined by accelerated thermal degradation test, that is, incubate the protein at 37°C for 48h, and no obvious degradation and precipitation were observed. The loss rate is less than 5% within the expiration date under appropriate storage condition.

[SEQUENCE]

M S L L F S R C N S I V T V K K N K R H M A E V N A S P L K H F V T A K K K I N G I F E Q L G A Y I Q E S A T F L E D T
Y R N A E L D P V T T E E Q V L D V K G Y L S K V R G I S E V L A R R H M K V A F F G R T S N G K S T V I N A M L W D K
V L P S G I G H T T N C F L R V E G T D G H E A F L L T E G S E E K R S A K T V N Q L A H A L H Q D K Q L H A G S L V S
V M W P N S K C P L L K D D L V L M D S P G I D V T T E L D S W I D K F C L D A D V F V L V A N S E S T L M Q T E K H F
F H K V S E R L S R P N I F I L N N R W D A S A S E P E Y M E E V R R Q H M E R C T S F L V D E L G V V D R S Q A G D R
I F F V S A K E V L N A R I Q K

[IDENTIFICATION]

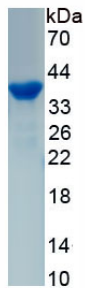


Figure. SDS-PAGE

[IMPORTANT NOTE]

The kit is designed for research use only, we will not be responsible for any issue if the kit was used in clinical diagnostic or any other procedures.