

RPD425Mu01 50µg

Recombinant Myosin Light Chain 3, Alkali, Ventricular, Slow Skeletal (MYL3)

Organism Species: *Mus musculus* (Mouse)

Instruction manual

FOR RESEARCH USE ONLY

NOT FOR USE IN CLINICAL DIAGNOSTIC PROCEDURES

12th Edition (Revised in Aug, 2016)

[PROPERTIES]

Source: Prokaryotic expression

Host: *E.coli*

Residues: Pro8~Lys199

Tags: N-terminal His and GST Tag

Subcellular Location: Secreted

Purity: > 95%

Traits: Freeze-dried powder

Buffer formulation: 20mM Tris, 150mM NaCl, pH8.0, containing 0.01% SKL, 5% Trehalose.

Original Concentration: 50µg/mL

Applications: Positive Control; Immunogen; SDS-PAGE; WB.

(May be suitable for use in other assays to be determined by the end user.)

Predicted isoelectric point: 4.9

Predicted Molecular Mass: 51.1kDa

Accurate Molecular Mass: 51kDa as determined by SDS-PAGE reducing conditions.

[USAGE]

Reconstitute in ddH₂O to a concentration of 0-0.1 mg/mL. Do not vortex.

[STORAGE AND STABILITY]

Storage: Avoid repeated freeze/thaw cycles.

Store at 2-8°C for one month.

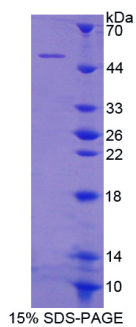
Aliquot and store at -80°C for 12 months.

Stability Test: The thermal stability is described by the loss rate. The loss rate was determined by accelerated thermal degradation test, that is, incubate the protein at 37°C for 48h, and no obvious degradation and precipitation were observed. The loss rate is less than 5% within the expiration date under appropriate storage condition.

[SEQUENCE]

PKK DDAKAAAPKA APAPAAAPAA APAAPEPER PKEAEFDASK
IKIEFTPEQI EEFKEAFLLF DRTPKGEMKI TYGQCGDVLK ALGQNPTQAE
VLRVLGKPKQ EELNSKMMDL ETFLPMLQHI SKNKDTGTYE DFVEGLRVFD
KEGNGTVMGA ELRHVLATLG ERLTDEVEEK LMAGQEDSNG CINYEAQVK

[**IDENTIFICATION**]



[**IMPORTANT NOTE**]

The kit is designed for research use only, we will not be responsible for any issue if the kit was used in clinical diagnostic or any other procedures.