

RPH178Hu01 50µg

Recombinant N-Sulfoglucosamine Sulfohydrolase (SGSH)

Organism Species: *Homo sapiens (Human)*

Instruction manual

FOR RESEARCH USE ONLY

NOT FOR USE IN CLINICAL DIAGNOSTIC PROCEDURES

13th Edition (Revised in Aug, 2023)

[PROPERTIES]

Source: Prokaryotic expression

Host: *E.coli*

Residues: Arg21~Asn389

Tags: N-terminal His and GST Tag

Subcellular Location: Lysosome

Purity: > 90%

Traits: Freeze-dried powder

Buffer formulation: PBS, pH7.4, containing 0.01% SKL, 5% Trehalose.

Original Concentration: 800µg/mL

Applications: Positive Control; Immunogen; SDS-PAGE; WB.

(May be suitable for use in other assays to be determined by the end user.)

Predicted isoelectric point: 7.1

Predicted Molecular Mass: 71.1kDa

Accurate Molecular Mass: 71kDa as determined by SDS-PAGE reducing conditions.

[USAGE]

Reconstitute in 10mM PBS (pH7.4) to a concentration of 0.1-1.0 mg/mL. Do not vortex.

[STORAGE AND STABILITY]

Storage: Avoid repeated freeze/thaw cycles.

Store at 2-8°C for one month.

Aliquot and store at -80°C for 12 months.

Stability Test: The thermal stability is described by the loss rate. The loss rate was determined by accelerated thermal degradation test, that is, incubate the protein at 37°C for 48h, and no obvious degradation and precipitation were observed. The loss rate is less than 5% within the expiration date under appropriate storage condition.

[SEQUENCE]

| | | | | |
|------------|------------|------------|------------|------------|
| | | RPRNALLLLA | DDGGFESGAY | NNSAIATPHL |
| DALARRSLLF | RNAFTSVSSC | SPSRASLLTG | LPQHQNMGY | LHQDVHHFNS |
| FDKVRSLPLL | LSQAGVRTGI | IGKKHVGPE | VYPDFAYTE | ENGSVLQVGR |
| NITRIKLLVR | KFLQTQDDRP | FFLYVAFHDP | HRCGHSQPQY | GTFCEKFGNG |
| ESGMGRIPDW | TPQAYDPLDV | LVPYFVPNTP | AARADLAAQY | TTVGRMDQGV |
| GLVLQELRDA | GVLNDTLVIF | TSDNGIPFPS | GRTNLYWPGT | AEPLLVSSE |
| HPKRWGQVSE | AYVSLDLTP | TILDWFSIPY | PSYAIFGSKT | IHLTGRSLLP |
| ALEAEPLWAT | VFGSQSHHEV | TMSYPMRSVQ | HRHFRLVHN | |

[IDENTIFICATION]

BAATTCCGTCCCGGAAAGCAGCTGCTGCTCCGCGATGACGGAGGCTTTGAGAGTGGCGCGTACAAACAACAGCGCCATCGCCACCCCGCACCTGGACGCGCTTGCGCCGCGCGCAGCGCTCCTTTCCGCAATGCCTTCACTCGGTCAAGAGCTGCTCTCCAGCGCGCGCAAGCGCTCCT

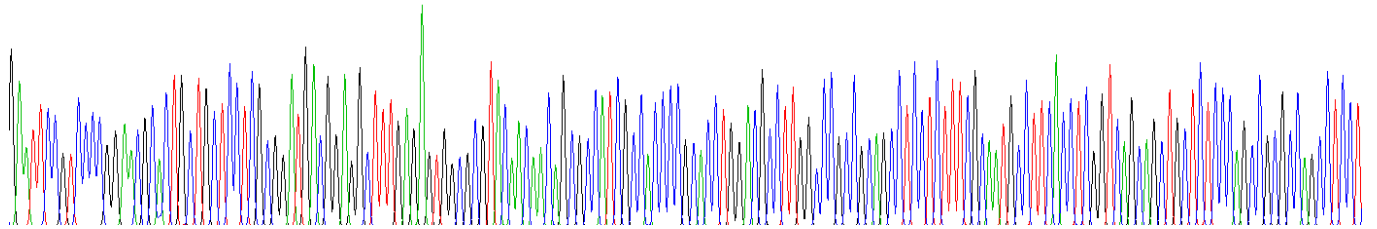


Figure . Gene Sequencing (extract)

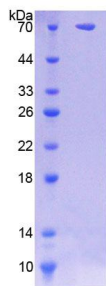


Figure. SDS-PAGE

[IMPORTANT NOTE]

The kit is designed for research use only, we will not be responsible for any issue if the kit was used in clinical diagnostic or any other procedures.