

**RPB924Mu01 10µg**

**Recombinant NADPH Oxidase 4 (NOX4)**

**Organism Species: *Mus musculus* (Mouse)**

***Instruction manual***

FOR RESEARCH USE ONLY

NOT FOR USE IN CLINICAL DIAGNOSTIC PROCEDURES

---

13th Edition (Revised in Aug, 2023)

**[ PROPERTIES ]**

**Source:** Prokaryotic expression

**Host:** *E.coli*

**Residues:** Gly210~Ser578

**Tags:** N-terminal His Tag

**Subcellular Location:** Membrane, Endoplasmic reticulum lumen

**Purity:** > 80%

**Traits:** Freeze-dried powder

**Buffer formulation:** PBS, pH7.4, containing 0.01% SKL, 5% Trehalose .

**Original Concentration:** 150µg/mL

**Applications:** Positive Control; Immunogen; SDS-PAGE; WB.

(May be suitable for use in other assays to be determined by the end user.)

**Predicted isoelectric point:** 8.7

**Predicted Molecular Mass:** 46.7kDa

**Accurate Molecular Mass:** 43kDa as determined by SDS-PAGE reducing conditions.

**[ USAGE ]**

Reconstitute in 10mM PBS (pH7.4) to a concentration of 0.1-1.0 mg/mL. Do not vortex.

**[ STORAGE AND STABILITY ]**

**Storage:** Avoid repeated freeze/thaw cycles.

Store at 2-8°C for one month.

Aliquot and store at -80°C for 12 months.

**Stability Test:** The thermal stability is described by the loss rate. The loss rate was determined by accelerated thermal degradation test, that is, incubate the protein at 37°C for 48h, and no obvious degradation and precipitation were observed. The loss rate is less than 5% within the expiration date under appropriate storage condition.

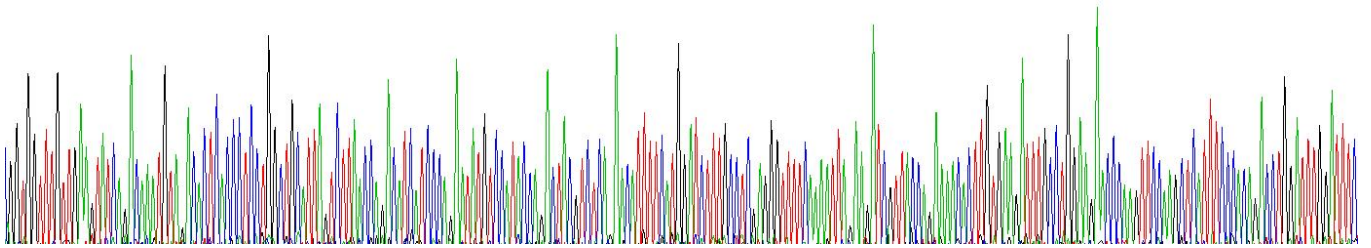
**[ SEQUENCE ]**

```

G GLLKYQTNVD THPPGCISLN QTSSQNMSIP DYVSEHFHGS
LPRGFSKLED RYQKTLVKIC LEEPKFQAHF PQTWIWISGP LCLYCAERLY
RCIRSNKPVT IISVINHPSD VMELRMIKEN FKARPGQYII LHCPVSVALE
NHPFTLT MCP TETKATFGVH FKVVGDWTER FRDLLLPSS QDSEILPFIH
SRNYPKLYID GPF GSPFEES LNYEVS LCVA GGIGVTPFAS ILNTLLDDWK
PYKLRRLYFI WVC RDIQSFQ WFADLLCVLH NKFWQENRPD FVNIQLYLSQ
TDGIQKIIGE KYHTLNSRLF IGRPRWKLLF DEIAKCNRGK TVGVFCCGPS
SISKTLHSLN NRNNSYGTKF EYNKESFS
  
```

**[ IDENTIFICATION ]**

GGLLKYQTNVD
THPPGCISLN
QTSSQNMSIP
DYVSEHFHGS
  
LPRGFSKLED
RYQKTLVKIC
LEEPKFQAHF
PQTWIWISGP
LCLYCAERLY
  
RCIRSNKPVT
IISVINHPSD
VMELRMIKEN
FKARPGQYII
LHCPSVSALE
  
NHPFTLTMCP
TETKATFGVH
FKVVGDWTER
FRDLLLPPSS
QDSEILPFIH
  
SRNYPKLYID
GPFGSPFEES
LNYEVSLCVA
GGIGVTPFAS
ILNTLLDDWK
  
PYKLRRLYFI
WVCRDIQSFQ
WFADLLCVLH
NKFWQENRPD
FVNIQLYLSQ
  
TDGIQKIIGE
KYHTLNSRLF
IGRPRWKLLF
DEIAKCNRGK
TVGVFCCGPS
  
SISKTLHSLS
NRNNSYGTKF
EYNKESFS



**Figure. Gene Sequencing (Extract)**

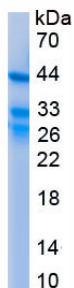


Figure. SDS-PAGE

**[ IMPORTANT NOTE ]**

The kit is designed for research use only, we will not be responsible for any issue if the kit was used in clinical diagnostic or any other procedures.